

HEMI OMNI ANTENNA HOA2-15RL/9802



ELECTRICAL

FREQUENCY:	1.52 - 1.66 GHz
GAIN:	2.5 dBiC Typ.
POLARISATION:	LHC & RHC
BEAMWIDTH:	155° (Az) x 155° (El) Approx.
AXIAL RATIO::	3.0 dB Typ.
VSWR:	1.5:1
POWER RATING:	10 W
FRONT TO BACK:	>15dB

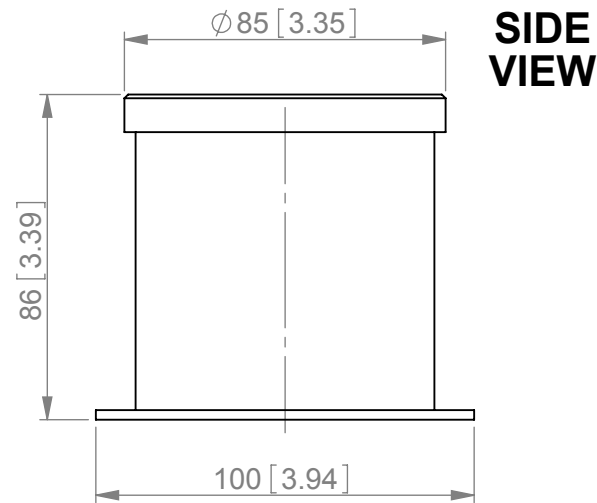
MECHANICAL

STANDARD FINISH:	Matt Black
MASS:	197 g / 1.93 ozs
TEMPERATURE:	-40° to +60°C
WIND LOADING:	1.09 kg / 2.39 lbs @ 100 mph

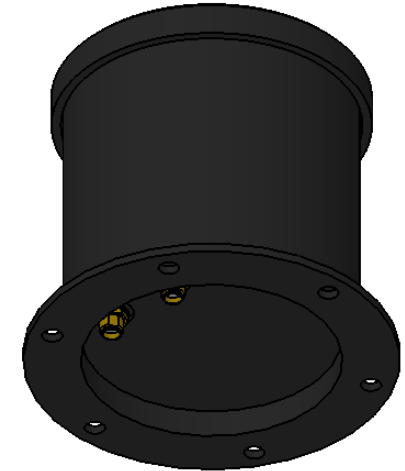
MOUNTING OPTIONS

KITS AVAILABLE:	N/A
See Separate Data Sheets	

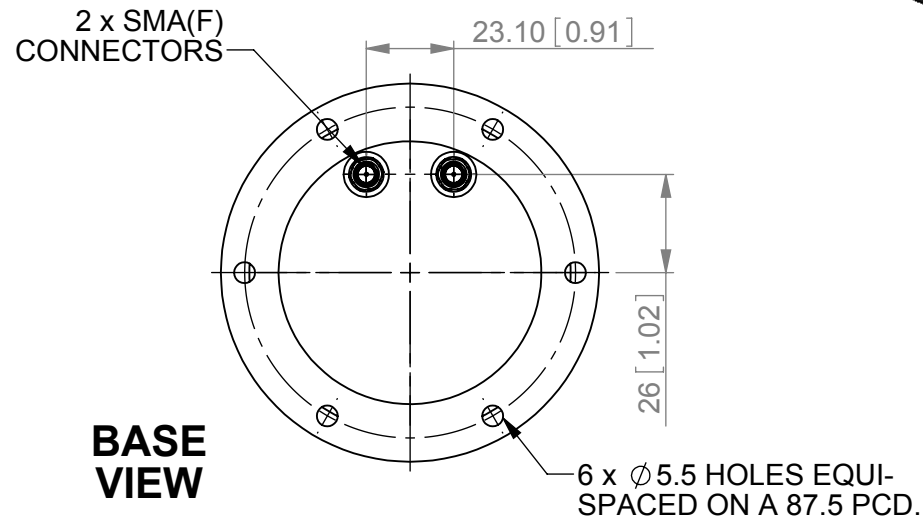
GA: 9802-1 Issued: 200109
DIMENSIONS: mm [inches] M



SIDE
VIEW



ISOMETRIC
VIEW



BASE
VIEW

HOA2-15RL/9802

European Antennas Ltd. has a policy of continuous development and therefore stress that the data contained on this sheet should be used for guidance only.

European Antennas Ltd is part of Cobham Defence Electronic Systems



Certificate No 9268

European Antennas Ltd
Lambda House, Cheveley
Newmarket, Suffolk, CB8 9RG, UK
Tel: +44 (0)1638 731888
sales@european-antennas.co.uk
www.european-antennas.co.uk