

OA8-5.8H/1555

COBHAM

Omni Antenna

The most important thing we build is trust

Designed for WiMAX/LTE Applications

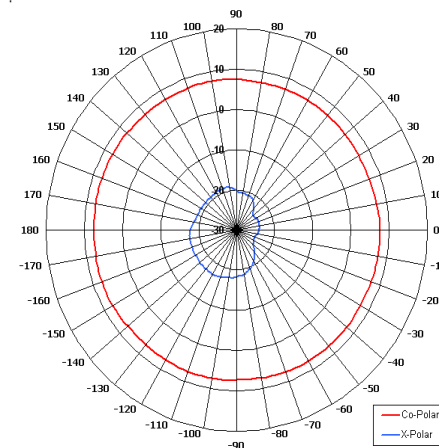
Suitable for Commercial Applications

Suitable for WLAN Applications

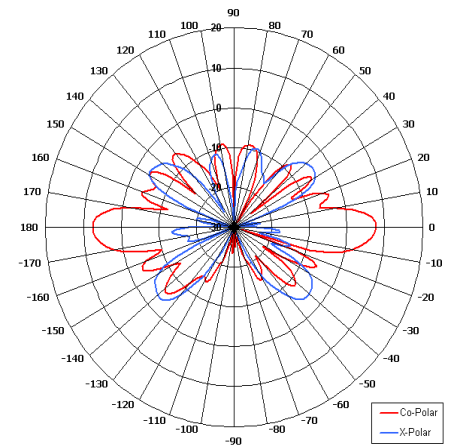
Horizontal Polarisation

High Gain

Lightweight

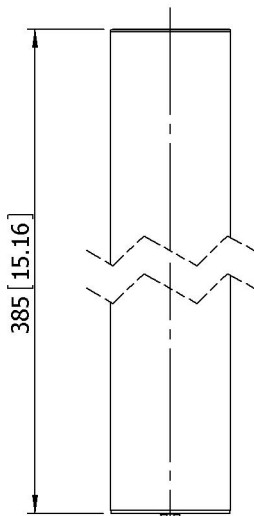


Azimuth Pattern

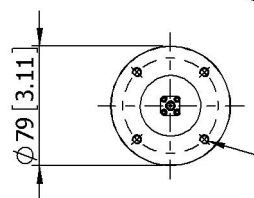


Elevation Pattern

SIDE VIEW



BASE VIEW



GA: 1555

SMA(F) CONNECTOR

MOUNTED VIA
4 OFF M6 x 10 DEEP
TAPPED HOLES
EQUI-SPACED ON 63 PCD



ELECTRICAL

Frequency	5.70 - 5.90 GHz
Gain	8 dBi Nom
Polarisation	Linear (Horizontal)
Beamwidth	360° (Az) x 15° (El) Approx
Cross Polar	25 dB Typ
VSWR	1.5:1
Power Rating	50 W
Front to Back	N/A

MECHANICAL

Standard Finish	Grey Radome, Alocrom Base
Mass	360 g (0.79 lbs)
Temperature	-40° to +60°C
Wind Loading	4.7 Kg (10.3 lbs) @ 100mph

MOUNTING OPTIONS

Kits Available	N/A
See separate data sheets	

ADDITIONAL NOTES

Issued 100910

European Antennas Limited trading as Cobham Antenna Systems, Microwave Antennas

European Antennas Limited has a policy of continuous development and stress that the information provided is a guide only and does not constitute an offer or contract or part thereof. Whilst every effort is made to ensure the accuracy of the information contained in this brochure, no responsibility can be accepted for any errors or omissions.

The copyright of antenna designs and images is copyright protected and owned by European Antennas Limited.
©European Antennas Limited

For further information please contact:

Cobham Antenna Systems, Microwave Antennas
Lambda House, Cheveley,
Newmarket, Suffolk CB8 9RG, UK.
Tel +44 (0)1638 732 177
Fax +44 (0) 1638 731999
Email newmarket.sales@cobham.com