



EUROPEAN ANTENNAS

Excellence through design
Creative in concept

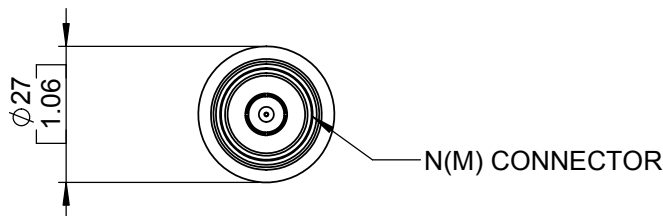
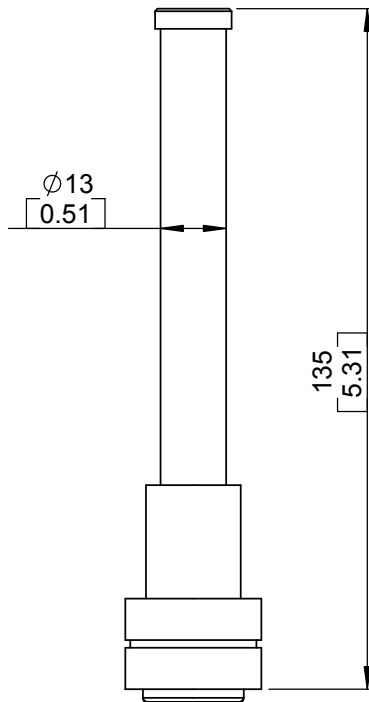
VERTICALLY POLARISED OMNI ANTENNA

MODEL: OA2-2.3V/1413

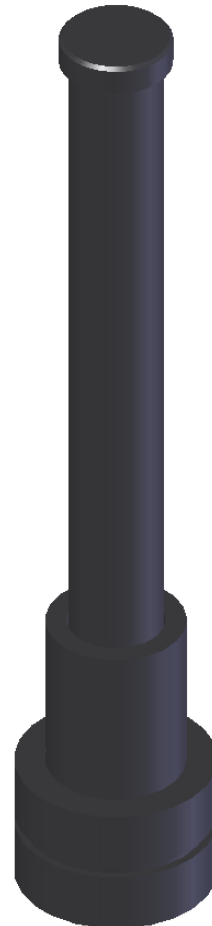
FREQUENCY: 2.28 - 2.42 GHz
POLARISATION: Linear (Vertical)
CROSS POLAR: >20 dB
POWER RATING: 50 W
TEMPERATURE: -30° to +70°C
FINISH: Matt black

GAIN: 2 dBi Nominal
BEAMWIDTH: 360° (Az) x 95° (El) Approx
VSWR: 1.5:1 Typical 2:1 Maximum
FRONT TO BACK: N/A
MASS: 65g Approx
WIND LOADING: N/A

FRONT VIEW



ISOMETRIC VIEW



BASE VIEW

GA: 1413-1 | Issued: 020307 | DIMENSIONS: mm [inches] | H

EUROPEAN ANTENNAS LTD.
LAMBDA HOUSE, CHEVELEY
NEWMARKET, SUFFOLK, CB8 9RG,
UNITED KINGDOM



Certificate No 9268

Tel: +44 (0)1638 731888
Fax: +44 (0)1638 731999
E-Mail: sales@european-antennas.co.uk
Website: www.european-antennas.co.uk