

LC07-2350-1018

COBHAM

Omni Antenna

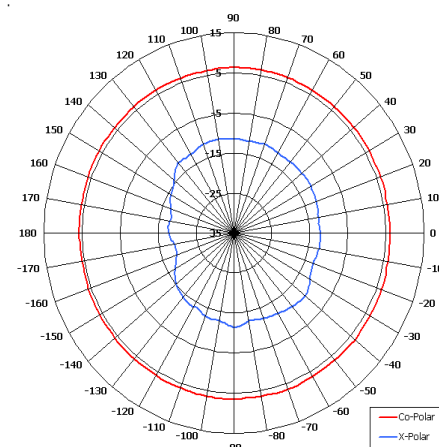
The most important thing we build is trust

Designed for Broadcast Applications

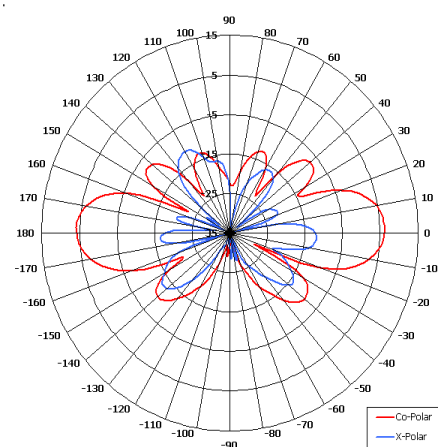
Suitable for Multiple Applications

Left Hand Circular Polarised

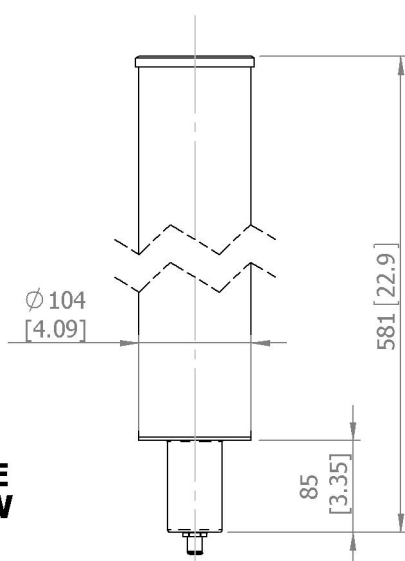
Rugged



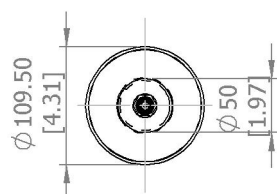
Azimuth Pattern



Elevation Pattern



**SIDE
VIEW**



**BASE
VIEW**

GA: 1018

MOUNTED VIA
Ø 50 (1.97) SPIGOT

N(F)
CONNECTOR

ELECTRICAL

Frequency	2.27 - 2.43 GHz
Gain	6 dBiC Nom
Polarisation	Left Hand Circular
Beamwidth	360° (Az) x 20° (El) Approx
Axial Ratio	3 dB Typ
VSWR	1.5:1 Band Ctr, 2:1 Band Edges
Power Rating	20 W
Front to Back	N/A

MECHANICAL

Standard Finish	Gloss White
Mass	1.12 Kg (2.464 lbs)
Temperature	-20° to +50°C
Wind Loading	10.5 Kg (23 lbs) @ 100mph

MOUNTING OPTIONS

Kits Available	MK2
See separate data sheets	

ADDITIONAL NOTES

Issued 051110

European Antennas Limited trading as Cobham Antenna Systems, Microwave Antennas

European Antennas Limited has a policy of continuous development and stress that the information provided is a guide only and does not constitute an offer or contract or part thereof. Whilst every effort is made to ensure the accuracy of the information contained in this brochure, no responsibility can be accepted for any errors or omissions.

The copyright of antenna designs and images is copyright protected and owned by European Antennas Limited.
©European Antennas Limited

For further information please contact:

Cobham Antenna Systems, Microwave Antennas

Lambda House, Cheveley,
Newmarket, Suffolk CB8 9RG, UK.

Tel +44 (0)1638 732 177

Fax +44 (0) 1638 731999

Email newmarket.sales@cobham.com