

# SECTOR ANTENNA SA15-90-21V/1066

CONFORMS TO ETSI EN302 326-3 CLASS SS



## ELECTRICAL

<b>FREQUENCY:</b>	2.0 - 2.3 GHz
<b>GAIN:</b>	15 dBi Nominal
<b>POLARISATION:</b>	Linear (Vertical)
<b>BEAMWIDTH:</b>	90° (Az) x 7° (El)
<b>CROSS POLAR:</b>	25 dB Minimum
<b>VSWR:</b>	2:1
<b>POWER RATING:</b>	50 W
<b>FRONT TO BACK:</b>	25 dB Minimum

## MECHANICAL

<b>STANDARD FINISH:</b>	Gloss White
<b>MASS:</b>	6.3 kg / 13.86 lbs inc. mtg. kit
<b>TEMPERATURE:</b>	-20° to +50°C
<b>WIND LOADING:</b>	20.8 kg / 45.7 lbs @ 100 mph

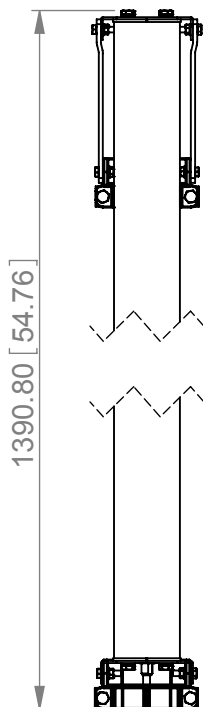
## MOUNTING OPTIONS

<b>KITS AVAILABLE:</b>	051A Supplied
See Separate Data Sheets	

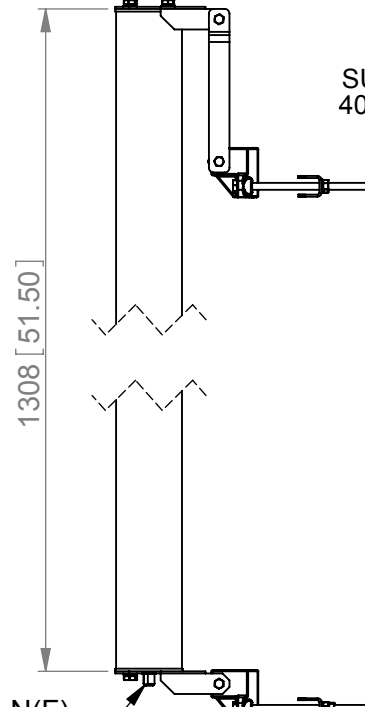
NOTE: PRODUCT DC GROUNDED

GA: 1066-5 Issued: 140308  
DIMENSIONS: mm [inches]

FRONT VIEW

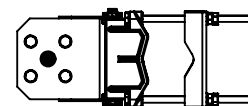


SIDE VIEW



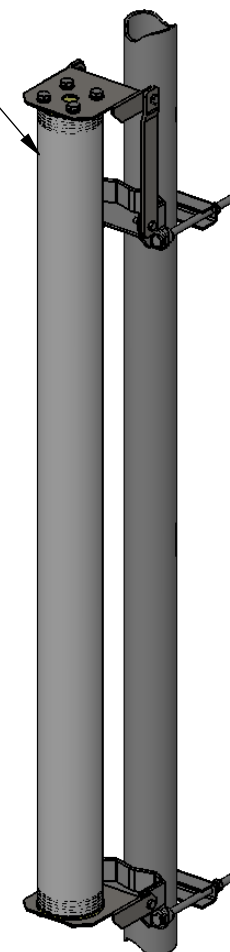
N(F)  
CONNECTOR

END VIEW



SUPPLIED WITH  
ADJUSTABLE  
MOUNTING KIT  
FOR ±9°  
IN ELEVATION

SUITS POLE SIZES  
40 [1.6] TO 120 [4.7]



ISOMETRIC  
VIEW

SA15-90-21V/1066

European Antennas Ltd. has a policy of continuous development and therefore stress that the data contained on this sheet should be used for guidance only.

European Antennas Ltd. is part of the Cobham Antennas Division



Certificate No 9268

European Antennas Ltd  
Lambda House, Cheveley  
Newmarket, Suffolk, CB8 9RG, UK  
Tel: +44 (0)1638 731888  
sales@european-antennas.co.uk  
[www.european-antennas.co.uk](http://www.european-antennas.co.uk)