



EUROPEAN ANTENNAS

Excellence through design
Creative in concept

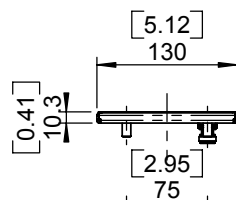
SECTOR ANTENNA

MODEL: SA16-60-25V-D1/1115

CONFORMS TO ETSI EN 301-525 V1.1.1 CLASS CS ASYMMETRICAL ELEVATION PATTERN

FREQUENCY:	2.40 - 2.70 GHz	GAIN:	16 dBi Nominal
POLARISATION:	Linear (Vertical)	BEAMWIDTH:	60° (Az.) x 10° (El.) Nominal
CROSS POLAR:	20 dB Minimum	VSWR:	1.5 : 1
POWER RATING:	20 W	FRONT TO BACK:	25 dB Minimum
TEMPERATURE:	-45° to +65°C	MASS:	1 Kg / 2.2 lbs
ELECTRICAL DOWNTILT:	2° Nominal	WIND LOADING:	15.3 Kg / 33.6 lbs @ 100 mph
INDEX OF ENVIRONMENTAL PROTECTION:	IP67	FINISH:	Gloss White Radome / Alocrom 1200 Chassis

TOP VIEW



MOUNTING VIA
4 X M8 X 13 STUDS

N(F)
CONNECTOR

[28.54]
725

[22.05]
560

[10.67]
271

[1.47]
37.5



PICTORIAL VIEW

REAR VIEW

DIMENSIONS: mm [inches]	M
GA: 1115 - 2	Issued: 221105

EUROPEAN ANTENNAS LTD.

Tel: +44 (0)1638 731888
Fax: +44 (0)1638 731999

LAMBDA HOUSE, CHEVELEY
NEWMARKET, SUFFOLK, CB8 9RG,
UNITED KINGDOM

E-Mail: sales@european-antennas.co.uk
Website: www.european-antennas.co.uk