



# EUROPEAN ANTENNAS

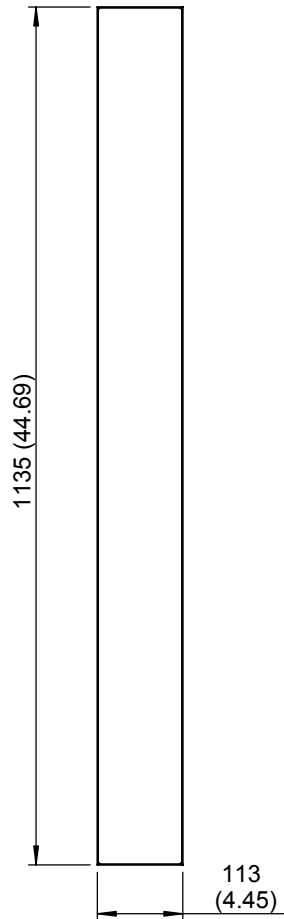
Excellence through design  
Creative in concept

## 60° DUAL SLANT SECTOR ANTENNA

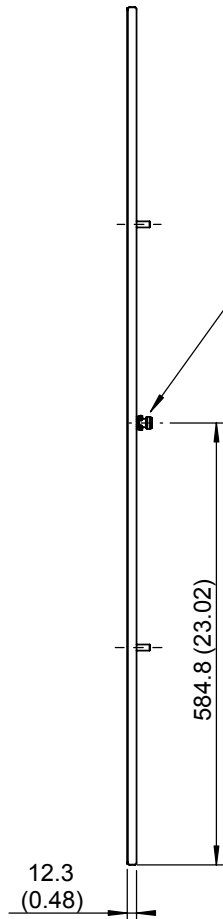
### MODEL: SA17-60-26-DS45-DT4/1029

<b>FREQUENCY:</b>	2.5 - 2.7 GHz	<b>GAIN:</b>	17 dBi Nom.
<b>POLARISATION:</b>	Dual Slant 45°	<b>BEAMWIDTH:</b>	60° (Az) x 6° (El)
<b>CROSS POLAR:</b>	-17 dB Max.	<b>VSWR:</b>	1.5:1
<b>POWER RATING:</b>	2 x 25 W	<b>FRONT TO BACK:</b>	30 dB
<b>TEMPERATURE:</b>	-20° to +50°C	<b>ISOLATION:</b>	30 dB Min.
<b>ELEC. DOWNTILT:</b>	4°	<b>MASS:</b>	1.6 Kg / 3.5 lbs (Excluding Mtg. Brkts)
<b>FINISH:</b>	White Radome, Alocrom 1200 Chassis	<b>WIND LOADING:</b>	20.8 Kg / 45.7 lbs @ 100 mph

### FRONT VIEW

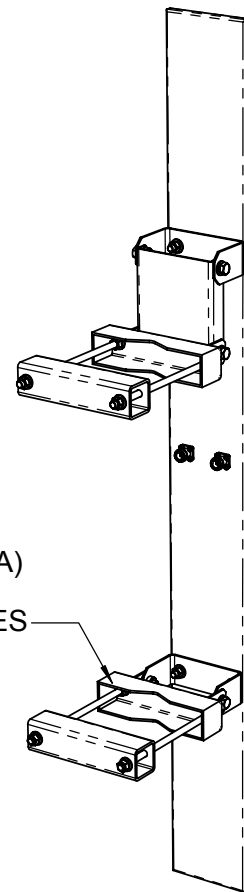


### SIDE VIEW

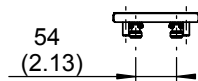


2 OFF N(F)  
CONNECTORS

SUPPLIED WITH  
ADJUSTABLE  
MOUNTING KIT (032A)  
FOR -10 to +3° EL.  
SUITS 2" to 4½" POLES



### PICTORIAL VIEW



### END VIEW

<b>DIMENSIONS:</b> mm (inches)	<b>M</b>
GA: 1029-1	Issued: 160703

EUROPEAN ANTENNAS LTD.

Tel: +44 (0)1638 731888  
Fax: +44 (0)1638 731999

LAMBDA HOUSE, CHEVELEY  
NEWMARKET, SUFFOLK, CB8 9RG,  
UNITED KINGDOM

E-Mail: sales@european-antennas.co.uk  
Website: www.european-antennas.co.uk

European Antennas Ltd. has a policy of continuous development and therefore stress that the data contained on this sheet should be used for guidance only.