



# EUROPEAN ANTENNAS

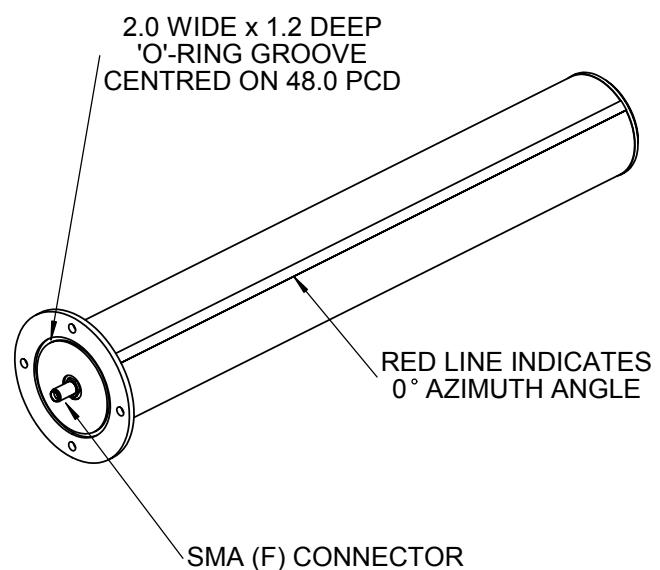
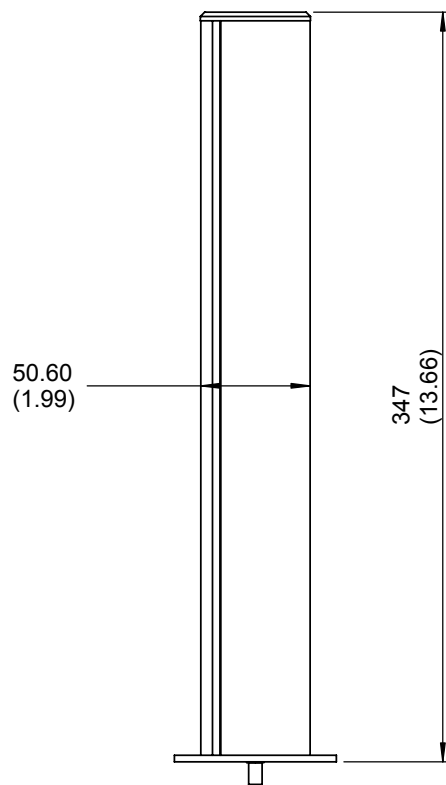
Excellence through design  
Creative in concept

## SECTOR ANTENNA

### MODEL: SA9-160-39V/1010

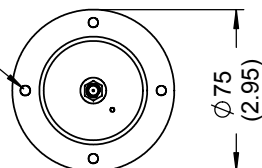
<b>FREQUENCY:</b>	3.8 - 4.0 GHz	<b>GAIN:</b>	9 dBi Nominal
<b>POLARISATION:</b>	Linear (Vertical)	<b>BEAMWIDTH:</b>	160° (Az) x 20° (El)
<b>CROSS POLAR</b>	20 dB Typical	<b>VSWR:</b>	1.5:1
<b>POWER RATING:</b>	20 W	<b>FRONT TO BACK:</b>	15 dB Typical
<b>TEMPERATURE:</b>	-20° to +50°C	<b>MASS:</b>	0.25 Kg / 0.55 lbs
<b>FINISH:</b>	Glass fibre Gloss White	<b>WIND LOADING:</b>	2.8 Kg / 6.2 lbs @ 100 mph

### SIDE VIEW



### ISOMETRIC VIEW

4 HOLES  $\phi 4.5$   
THRO' EQUI SP.  
ON 63.0 PCD



### BASE VIEW

**DIMENSIONS:** mm (inches)

GA:1010-1 Issued:081002

EUROPEAN ANTENNAS LTD.

Tel: +44 (0)1638 731888  
Fax: +44 (0)1638 731999

LAMBDA HOUSE, CHEVELEY  
NEWMARKET, SUFFOLK, CB8 9RG,  
UNITED KINGDOM

E-Mail: [sales@european-antennas.co.uk](mailto:sales@european-antennas.co.uk)  
Website: [www.european-antennas.co.uk](http://www.european-antennas.co.uk)

European Antennas Ltd. has a policy of continuous development and therefore stress that the data contained on this sheet should be used for guidance only.