



EUROPEAN ANTENNAS

Excellence through design
Creative in concept

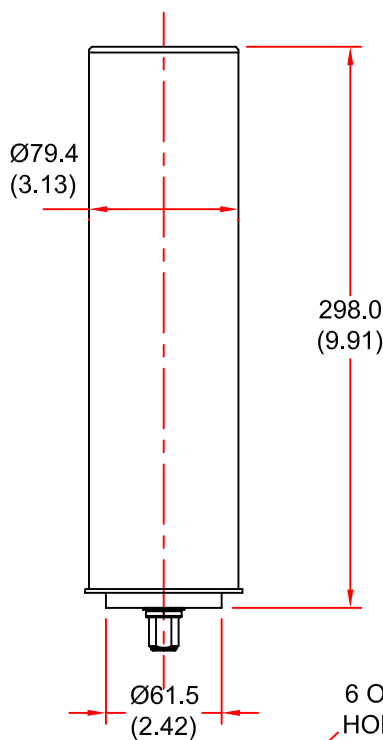


CIRCULARLY POLARISED OMNI ANTENNA

MODEL: LCO5-3450/813

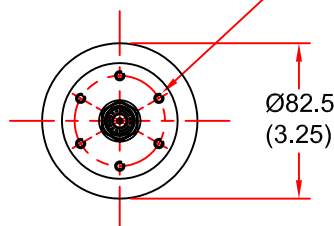
| | | | |
|---------------|-----------------|----------------|----------------------------|
| FREQUENCY: | 3.40 - 3.50 GHz | GAIN: | 5 dBiC |
| POLARISATION: | Circular (LHC) | BEAMWIDTH: | 360° (Az) x 40° (EI) |
| AXIAL RATIO: | 2 dB Typ | VSWR: | 1.5:1 |
| POWER RATING: | 10 W | FRONT TO BACK: | N/A |
| TEMPERATURE: | -20°C to +50°C | MASS: | 0.75 Kg / 1.65 lbs |
| FINISH: | Gloss White | WIND LOADING: | 3.8 Kg / 8.4 lbs @ 100 mph |

SIDE VIEW



N(F)
CONNECTOR

6 OFF M5 TAPPED
HOLES ON 48 PCD



BASE VIEW

ISOMETRIC VIEW

DIMENSIONS: mm (inches)

GA 813-2 Issued 100102

EUROPEAN ANTENNAS LTD.

LAMBDA HOUSE, CHEVELEY,
NEWMARKET, SUFFOLK, CB8 9RG,
UNITED KINGDOM.

E-Mail: sales@european-antennas.co.uk

Website: www.european-antennas.co.uk

TEL: +44 (0)1638 731888

FAX: +44 (0)1638 731999