



EUROPEAN ANTENNAS

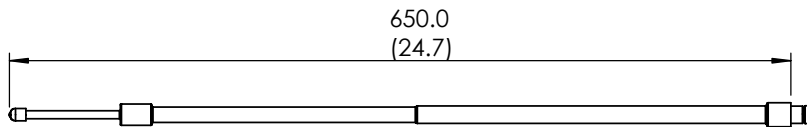
Excellence through design
Creative in concept

FLEXIBLE DIPOLE ANTENNA

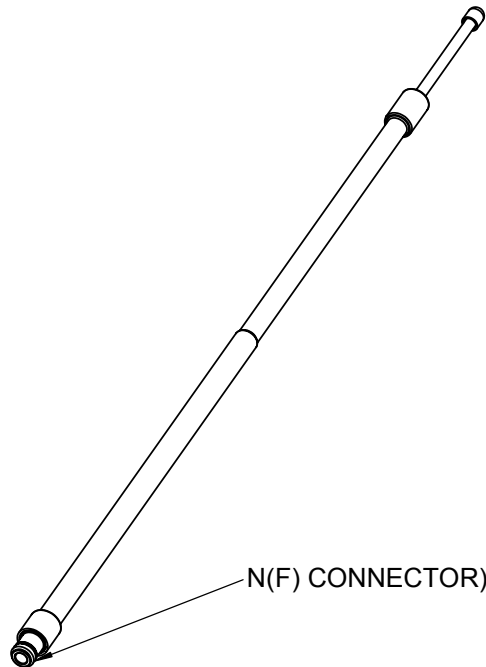
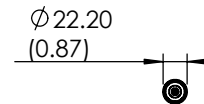
MODEL: FVD2-2600/834

FREQUENCY:	2.5 - 2.7 GHz	GAIN:	2 dBi Nominal
POLARISATION:	Linear (Vertical)	BEAMWIDTH:	360° (Az) x 80° (El)
CROSS POLAR	15dB Typ.	VSWR:	2.0:1 Max.
POWER RATING:	25W	FRONT TO BACK:	N/A
TEMPERATURE:	-20°C to +50°C	MASS:	230g / 8.2 oz
FINISH:	Matt Black	WIND LOADING:	0.96 Kg / 2.1 lbs @ 100 mph

SIDE VIEW



END VIEW



N(F) CONNECTOR

ISOMETRIC VIEW

DIMENSIONS: mm (inches)

GA: 0834-1 Issued:310801

EUROPEAN ANTENNAS LTD.

Tel: +44 (0)1638 731888
Fax: +44 (0)1638 731999

LAMBDA HOUSE, CHEVELEY
NEWMARKET, SUFFOLK, CB8 9RG,
UNITED KINGDOM

E-Mail: sales@european-antennas.co.uk
Website: www.european-antennas.co.uk