

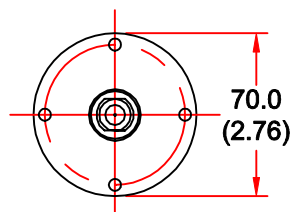
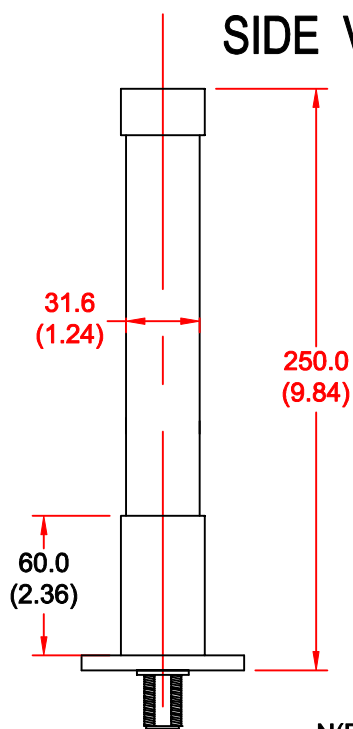


## VERTICALLY POLARISED OMNI ANTENNA

MODEL: VOA4-2450-HEL/817

FREQUENCY:	2.40 - 2.50 GHz	GAIN:	4 dBi
POLARISATION:	Linear (Vertical)	BEAMWIDTH:	360° x 40°
CROSS POLAR:	20 dB Typical	VSWR:	1.5 : 1
POWER RATING:	10 W	FRONT TO BACK:	N/A
TEMPERATURE:	-20°C to +50°C	MASS:	0.3 Kg/0.7 lbs
FINISH:	Painted Gloss White	WIND LOADING:	1.8Kg/3.9lbs @100mph

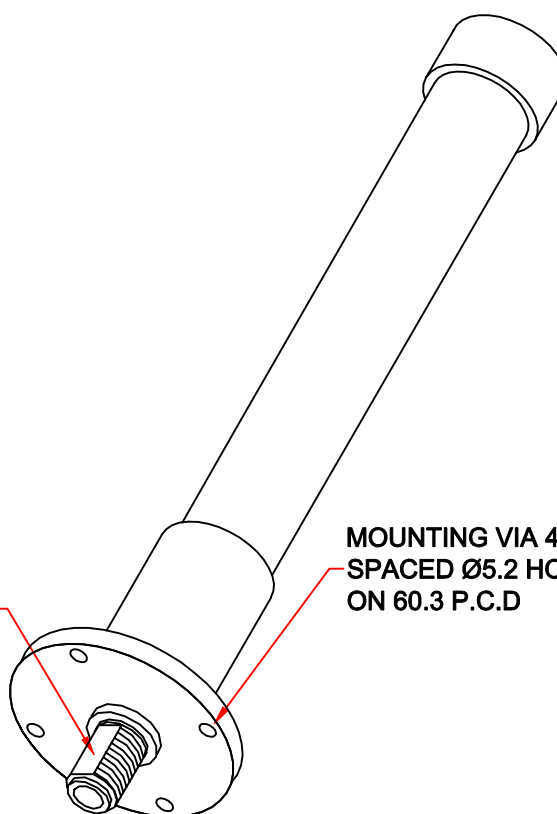
SIDE VIEW



BASE VIEW

N(F) CONNECTOR

MOUNTING VIA 4 EQUALLY  
SPACED Ø5.2 HOLES  
ON 60.3 P.C.D



ISOMETRIC VIEW

DIMENSIONS: mm (inches)

GA 817-1 Issued 240101

EUROPEAN ANTENNAS LTD.

TEL: +44 (0)1638 731888  
FAX: +44 (0)1638 731999

LAMBDA HOUSE, CHEVELEY,  
NEWMARKET, SUFFOLK, CB8 9RG,  
UNITED KINGDOM.

E-Mail: [sales@european-antennas.co.uk](mailto:sales@european-antennas.co.uk)  
Website: [www.european-antennas.co.uk](http://www.european-antennas.co.uk)