



EUROPEAN ANTENNAS

Excellence through design
Creative in concept

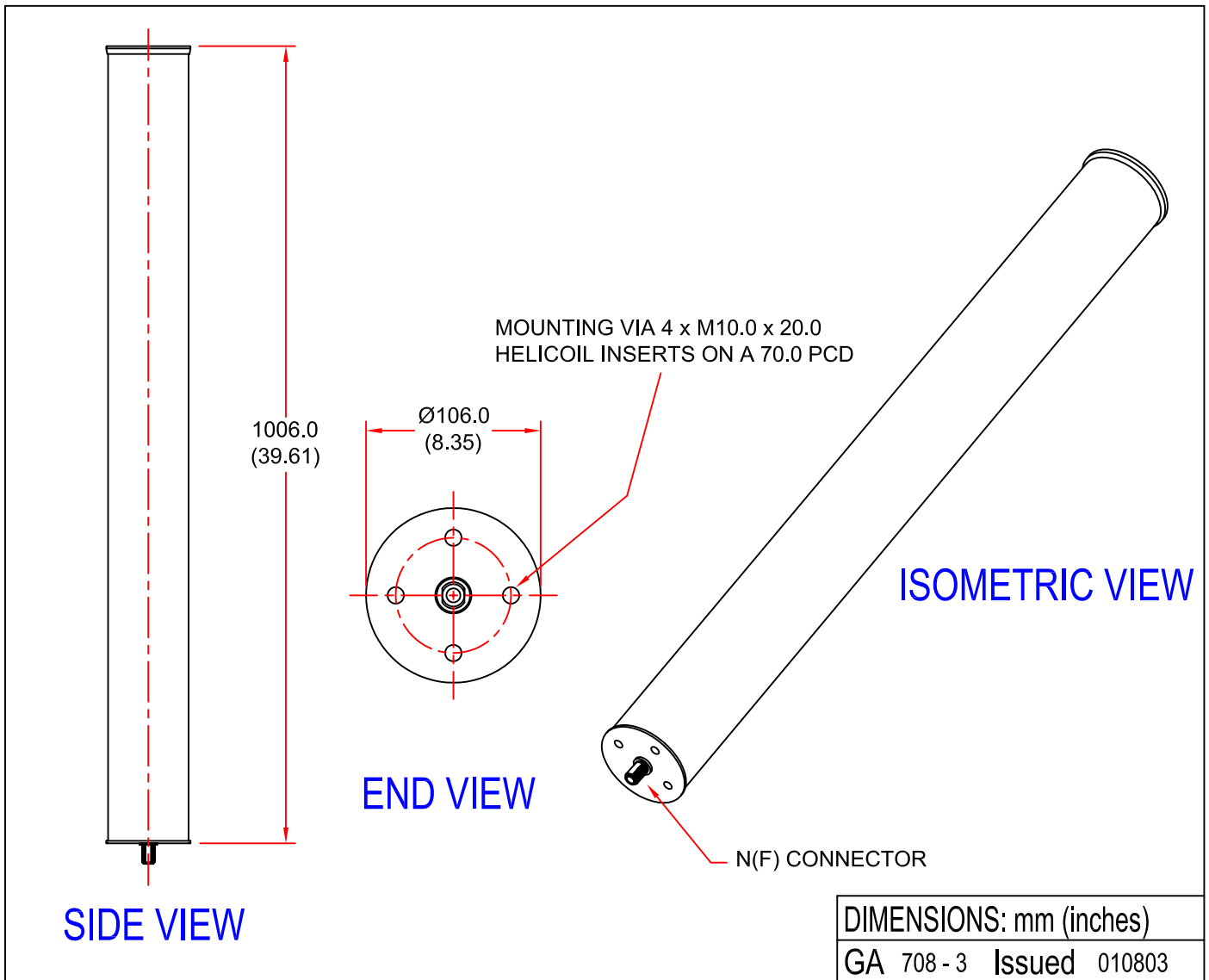


EXTENDED PERFORMANCE OMNI ANTENNA

MODEL: XV09-2150/708

CONFORMS TO ETSI EN 301 525 V1.1.1

FREQUENCY:	2.02 - 2.28 GHz	GAIN:	9.5 dBi Typical
POLARISATION:	Linear (Vertical)	BEAMWIDTH:	360° (Azimuth) x 8° (Elevation)
CROSS POLAR:	25 dB	VSWR:	1.5:1 (2.07 - 2.28 GHz), 2.0:1 (Below 2.07 GHz)
POWER RATING:	50 W	D.C. GROUNDED:	Yes
TEMPERATURE:	-40°C to +60°C	MASS:	1.95 Kg / 4.3 lbs
RADOME:	Gloss White / Glass Fibre	WIND LOADING:	16.9 Kg / 37.3 lbs @ 100mph



EUROPEAN ANTENNAS LTD.

TEL: +44 (0)1638 731888
FAX: +44 (0)1638 731999

LAMBDA HOUSE, CHEVELEY,
NEWMARKET, SUFFOLK, CB8 9RG,
UNITED KINGDOM.

E-Mail: sales@european-antennas.co.uk
Website: www.european-antennas.co.uk