



# EUROPEAN ANTENNAS

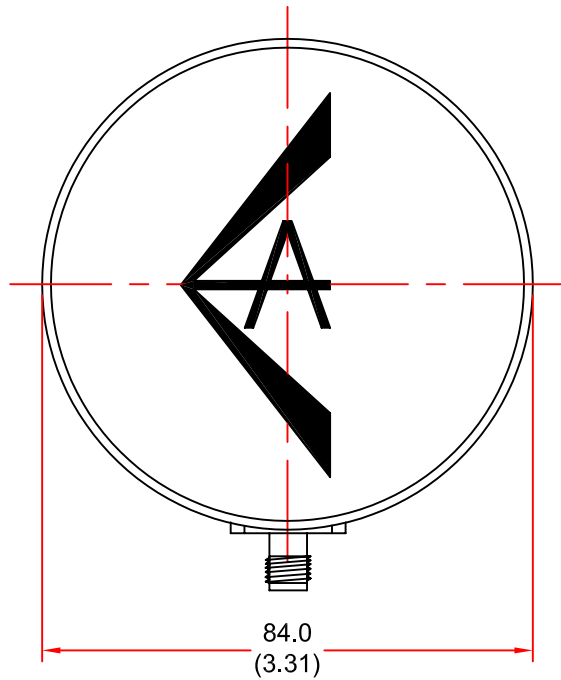
Excellence through design  
Creative in concept



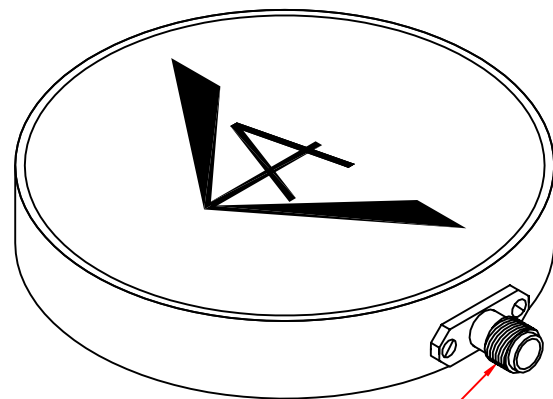
## LOW PROFILE ANTENNA

MODEL: LPA7-25L/690

FREQUENCY:	2.30 - 2.70 GHz	GAIN:	7 dBiC
POLARISATION:	Left Hand Circular	BEAMWIDTH:	80° (Azimuth) x 80° (Elevation)
AXIAL RATIO:	2 dB	VSWR:	1.5:1
POWER RATING:	10 W	FRONT TO BACK:	20 dB min
TEMPERATURE:	-20° to +50°C	MASS:	150 g
RADOME:	Glass Fibre/Matt Black	WIND LOADING:	0.9 Kg / 2.0 lbs @ 100 mph

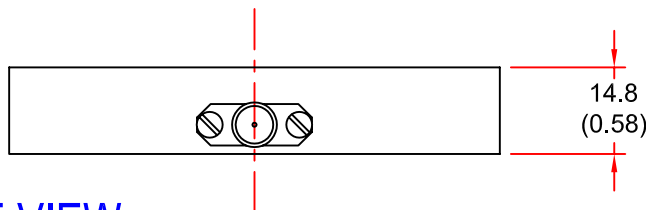


FRONT VIEW



SMA(F) CONNECTOR

ISOMETRIC VIEW



SIDE VIEW

DIMENSIONS: mm (inches)

GA 690-1 Issued 110400

EUROPEAN ANTENNAS LTD.

LAMBDA HOUSE, CHEVELEY,  
NEWMARKET, SUFFOLK, CB8 9RG,  
UNITED KINGDOM.

TEL: +44 (0)1638 731888  
FAX: +44 (0)1638 731999

E-Mail: sales@european-antennas.co.uk  
Website: www.european-antennas.co.uk

European Antennas Ltd. has a policy of continuous development and therefore stress that the data contained on this sheet should be used for guidance only.