



EUROPEAN ANTENNAS

Excellence through design
Creative in concept

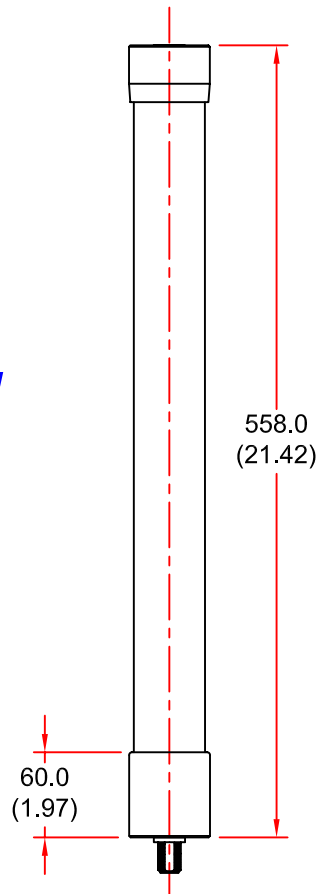


VERTICALLY POLARISED OMNI ANTENNA

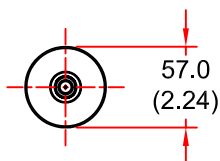
MODEL: VOA7-2170/667

FREQUENCY:	2.07 - 2.28 GHz	GAIN:	6 dBi
POLARISATION:	Linear (Vertical)	BEAMWIDTH:	360° (Azimuth) x 20° (Elevation)
CROSS POLAR:	20 dB	VSWR:	2:1
POWER RATING:	25 W	FRONT TO BACK:	N/A
TEMPERATURE:	-20 to +50°C	MASS:	500 g / 1.1 lbs
RADOME:	Gloss White	WIND LOADING:	4.61 Kg / 10.15 lbs @ 100 mph

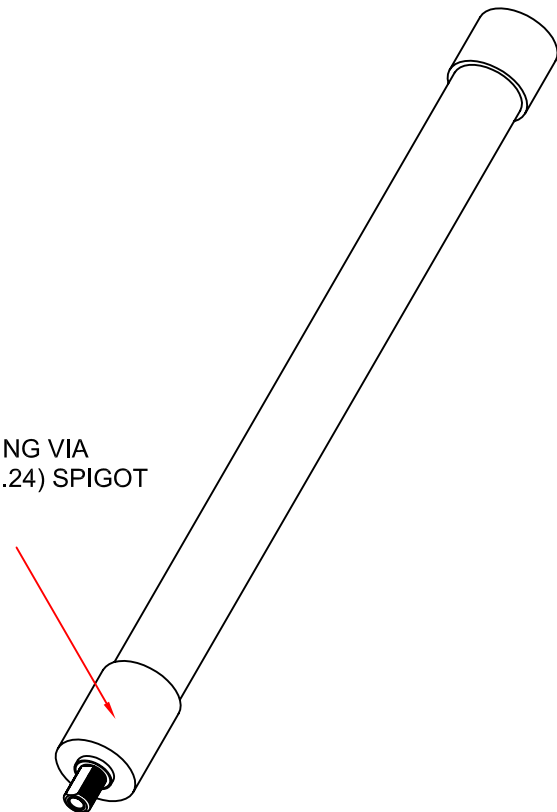
SIDE VIEW



BOTTOM VIEW



MOUNTING VIA
Ø57.0 (2.24) SPIGOT



ISOMETRIC VIEW

N(F) CONNECTOR

DIMENSIONS: mm (inches)

GA 667-1 Issued 240500

EUROPEAN ANTENNAS LTD.

LAMBDA HOUSE, CHEVELEY,
NEWMARKET, SUFFOLK, CB8 9RG,
UNITED KINGDOM.

TEL: +44 (0)1638 731888
FAX: +44 (0)1638 731999

E-Mail: sales@european-antennas.co.uk
Website: www.european-antennas.co.uk