



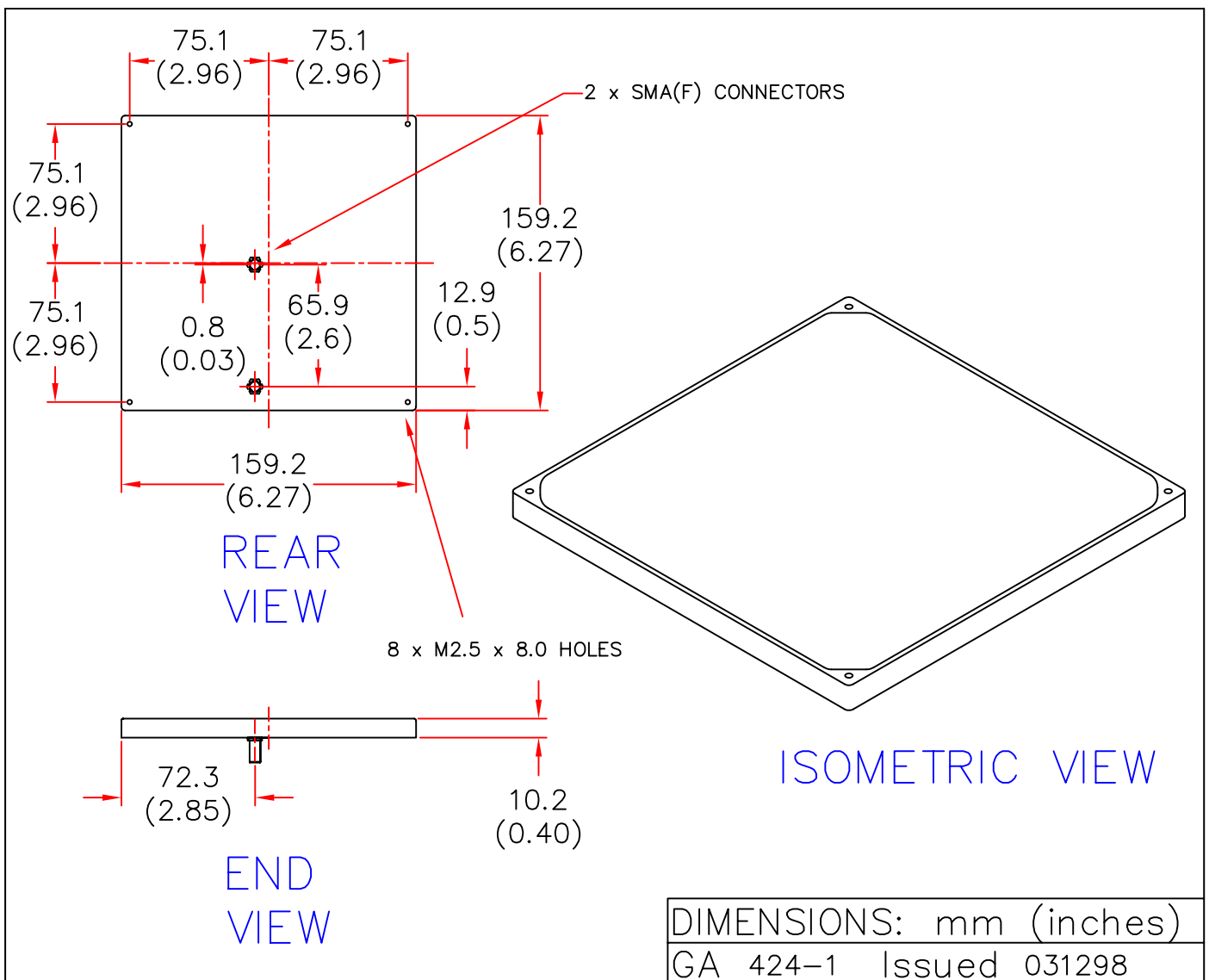
EUROPEAN ANTENNAS



FLAT PANEL ANTENNA

MODEL: FPA13-35VH-D2/424

FREQUENCY: 3.4-3.5GHz	GAIN: 13 dBi
POLARISATION: Dual Linear (Vert & Hori)	BEAMWIDTH: 40° x 40° Approx
ISOLATION BETWEEN INPUTS: 35 dB Min	VSWR: 1.5:1
POWER RATING: 2 x 10W	FRONT TO BACK: > 30 dB
TEMPERATURE: -20°C to +50°C	MASS: 0.6Kg/1.32lbs
RADOME: Glass Fibre/Gloss White	WIND LOADING: 9.04lbs/4.11Kg @ 100 mph



EUROPEAN ANTENNAS LTD.

TEL: +44 (0)1638 731888

LAMBDA HOUSE, CHEVELEY,
NEWMARKET, SUFFOLK, CB8 9RG,
UNITED KINGDOM.

FAX: +44 (0)1638 731999

European Antennas Ltd. has a policy of continuous development and therefore stress that the data contained on this sheet should be used for guidance only.