



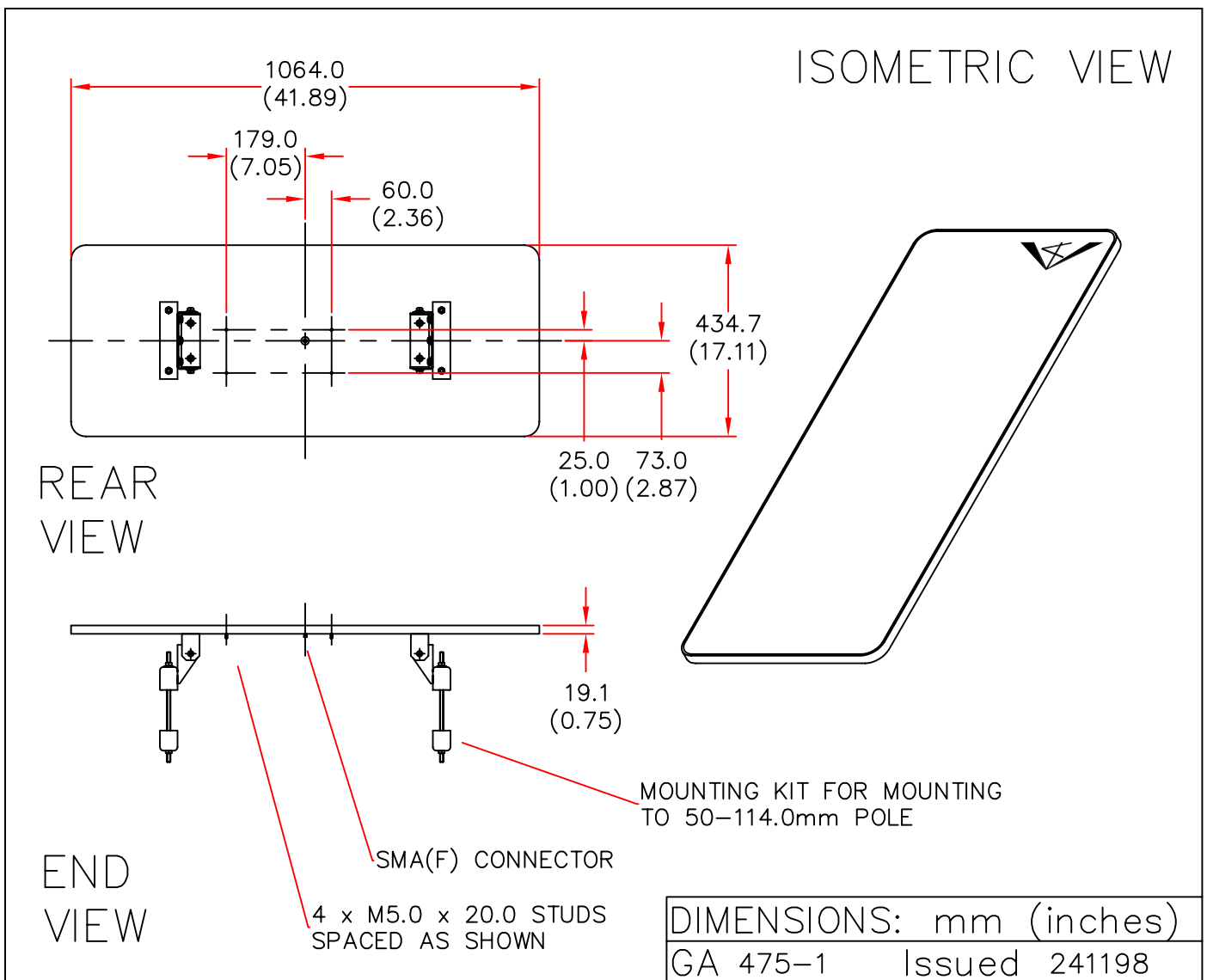
EUROPEAN ANTENNAS



SECTOR ANTENNA

MODEL: SA23-08-20-23R/475

FREQUENCY: 2.25 – 2.35 GHz	GAIN: 21 dBiC Typical
POLARISATION: R.H. Circular	BEAMWIDTH: 20° X 8°
AXIAL RATIO: 2 dB Typical	VSWR: 1.5 : 1
POWER RATING: 5 W	FRONT TO BACK: >25 dB
TEMPERATURE: -20°C to +50°C	MASS: 15 Kg/33 lbs
RADOME: Glass Fibre/Gloss White	WIND LOADING: 75 Kg/165 lbs @100 mph



EUROPEAN ANTENNAS LTD.

TEL: +44 (0)1638 731888

LAMBDA HOUSE, CHEVELEY,
NEWMARKET, SUFFOLK, CB8 9RG,
UNITED KINGDOM.

FAX: +44 (0)1638 731999

European Antennas Ltd. has a policy of continuous development and therefore stress that the data contained on this sheet should be used for guidance only.