

GSM LOW PROFILE ANTENNA

LPA7-900V-502/288



ELECTRICAL

FREQUENCY:	870 - 960 MHz
GAIN:	8 dBi (Min.)
POLARISATION:	Linear (Vertical)
BEAMWIDTH:	70° (Az) x 60° (El)
CROSS POLAR:	20 dB Typ.
VSWR:	2:1
POWER RATING:	50 W
FRONT TO BACK:	25 dB

MECHANICAL

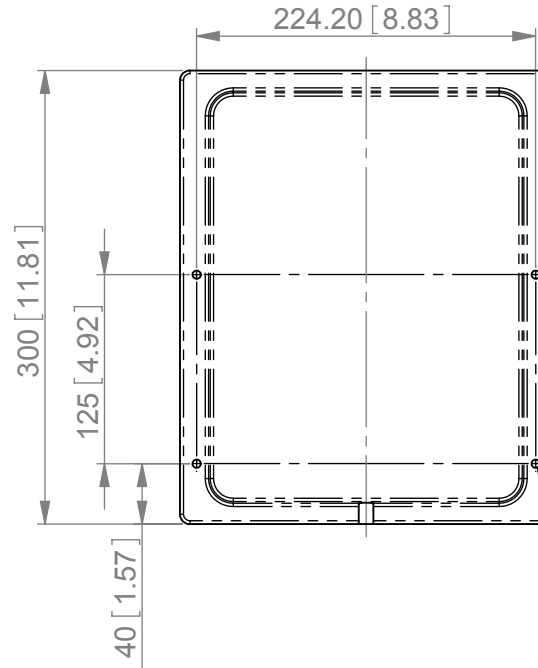
STANDARD FINISH:	ABS Polymer - White
MASS:	0.75 kg / 1.65 lbs
TEMPERATURE:	-40° to +70°C
WIND LOADING:	12 kg / 26.3 lbs @ 100 mph

MOUNTING OPTIONS

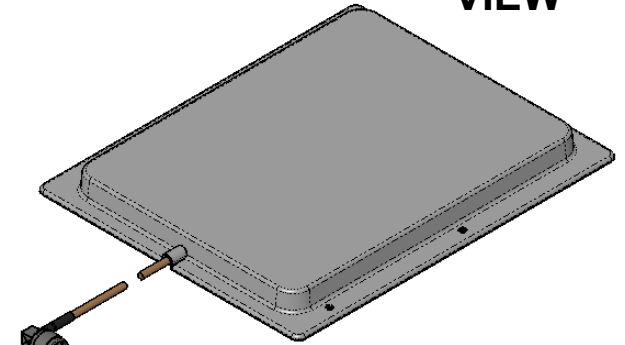
KITS AVAILABLE: N/A
See Separate Data Sheets

GA: 288-2 Issued: 260308
DIMENSIONS: mm [inches]

SIDE VIEW



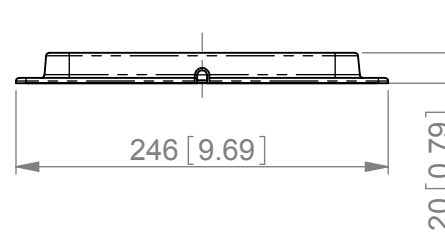
ISOMETRIC VIEW



N(M) RIGHT-ANGLED
CONNECTOR ON
550mm OF RG400

MOUNT VIA 4 OFF
Ø 5.5 (0.22) HOLES

BASE VIEW



LPA7-900V-502/288

European Antennas Ltd. has a policy of continuous development and therefore stress that the data contained on this sheet should be used for guidance only.

European Antennas Ltd. is part of the Cobham Antennas Division



Certificate No 9268

European Antennas Ltd
Lambda House, Cheveley
Newmarket, Suffolk, CB8 9RG, UK
Tel: +44 (0)1638 731888
sales@european-antennas.co.uk
www.european-antennas.co.uk