



EUROPEAN ANTENNAS

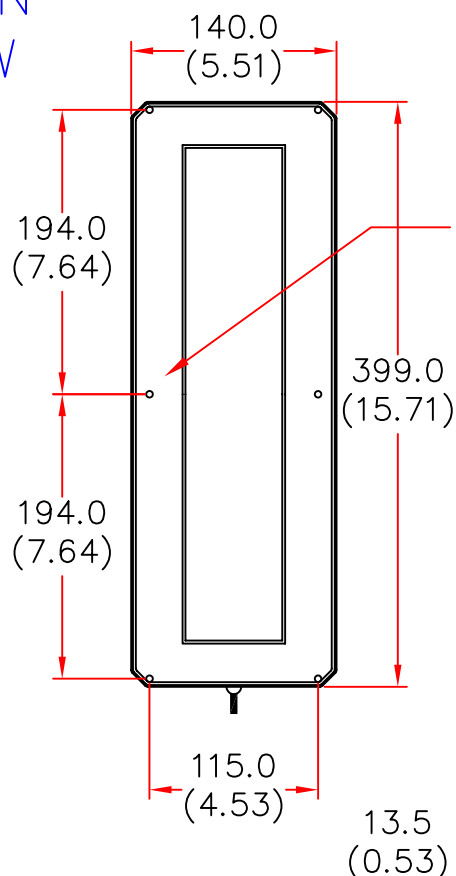


SECTOR ANTENNA

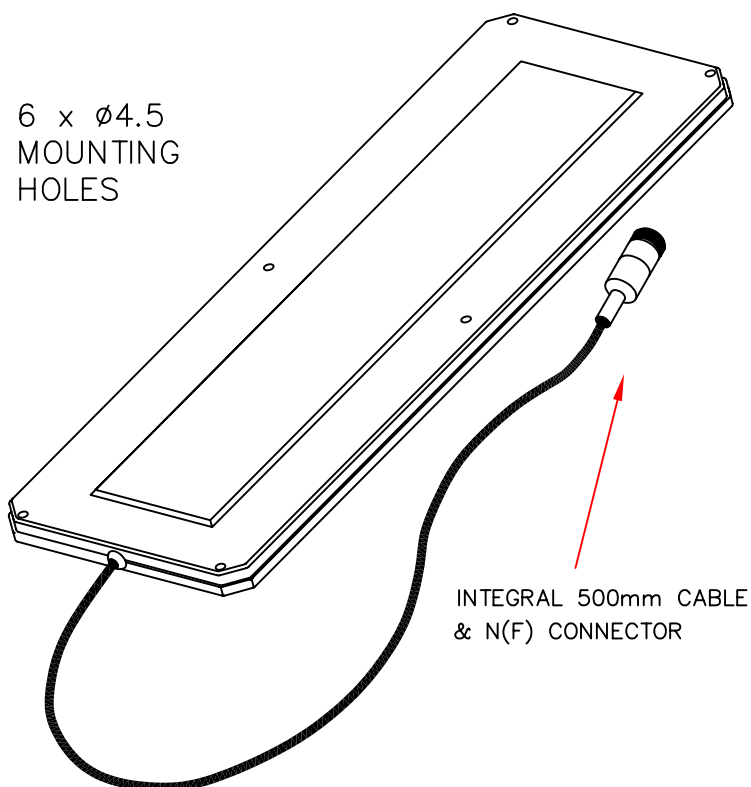
MODEL: SA10-18V/382

FREQUENCY: 1.71 – 1.88 GHz	GAIN: 10 dBi
POLARISATION: Linear (Vertical)	BEAMWIDTH: 70° (azimuth) x 40° (elevation)
CROSS POLAR: 20 dB Typical	VSWR: 1.5 : 1 Max
POWER RATING: 30 W @40°C	FRONT TO BACK: 30 dB
TEMPERATURE: -40°C to +60°C	MASS: 0.65 Kg/1.43lbs
RADOME: Moulded Polymer, Painted Gloss White	WIND LOADING: 9.0Kg/19.9lbs @100mph

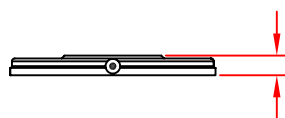
PLAN
VIEW



ISOMETRIC VIEW



END
VIEW



DIMENSIONS: mm (inches)

GA 382-1 Issued 070197

EUROPEAN ANTENNAS LTD.

TEL: +44 (0)1638 731888

LAMBDA HOUSE, CHEVELEY,
NEWMARKET, SUFFOLK, CB8 9RG,
UNITED KINGDOM.

FAX: +44 (0)1638 731999

European Antennas Ltd. has a policy of continuous development and therefore stress that the data contained on this sheet should be used for guidance only.