



# EUROPEAN ANTENNAS

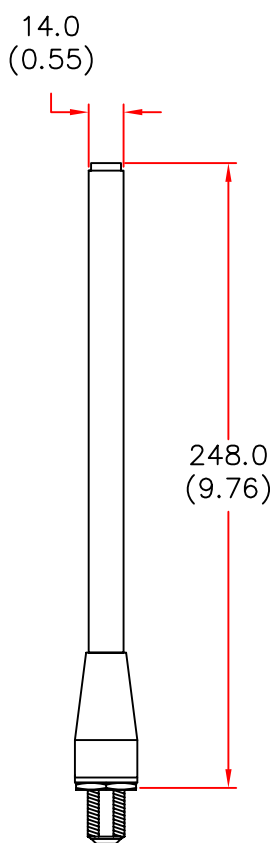


## RUGGED DIPOLE ANTENNA

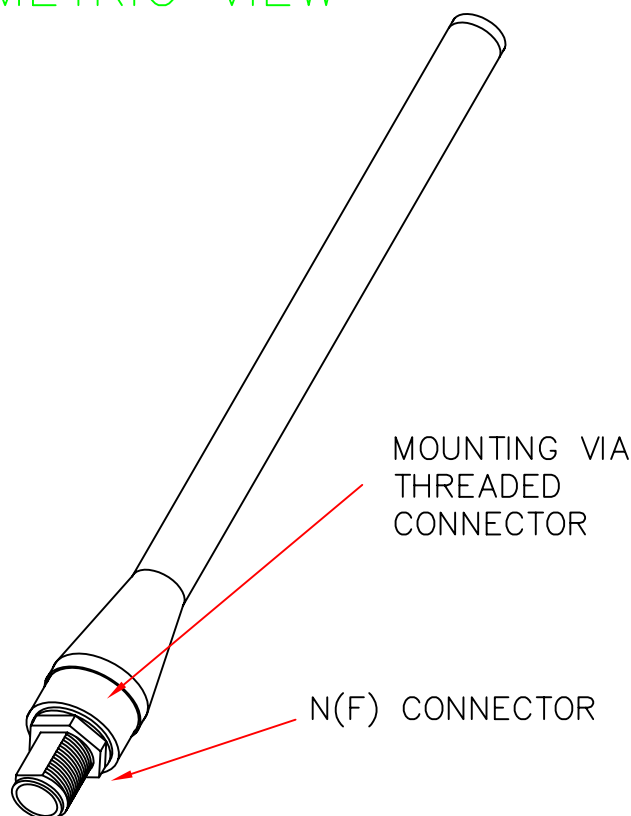
MODEL: EVD2-915/260

FREQUENCY: 870 – 960 MHz	GAIN: 2 dBi
POLARISATION: Linear (Vertical)	BEAMWIDTH: 360° x 80°
CROSS POLAR: 15 – 20 dB	VSWR: 2 : 1 Max
POWER RATING: 20 W	FRONT TO BACK: N/A
TEMPERATURE: -20°C to +50°C	MASS: 120 g/4 oz
RADOME: Glass Fibre (Matt Black)	WIND LOADING: 0.6Kg/1.3lbs @100mph

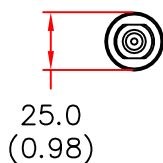
SIDE  
VIEW



ISOMETRIC VIEW



END  
VIEW



DIMENSIONS: mm (inches)

GA 260 Issued 180497

EUROPEAN ANTENNAS LTD.

TEL: +44 (0)1638 731888

LAMBDA HOUSE, CHEVELEY,  
NEWMARKET, SUFFOLK, CB8 9RG,  
UNITED KINGDOM.

FAX: +44 (0)1638 731999

European Antennas Ltd. has a policy of continuous development and therefore stress that the data contained on this sheet should be used for guidance only.