



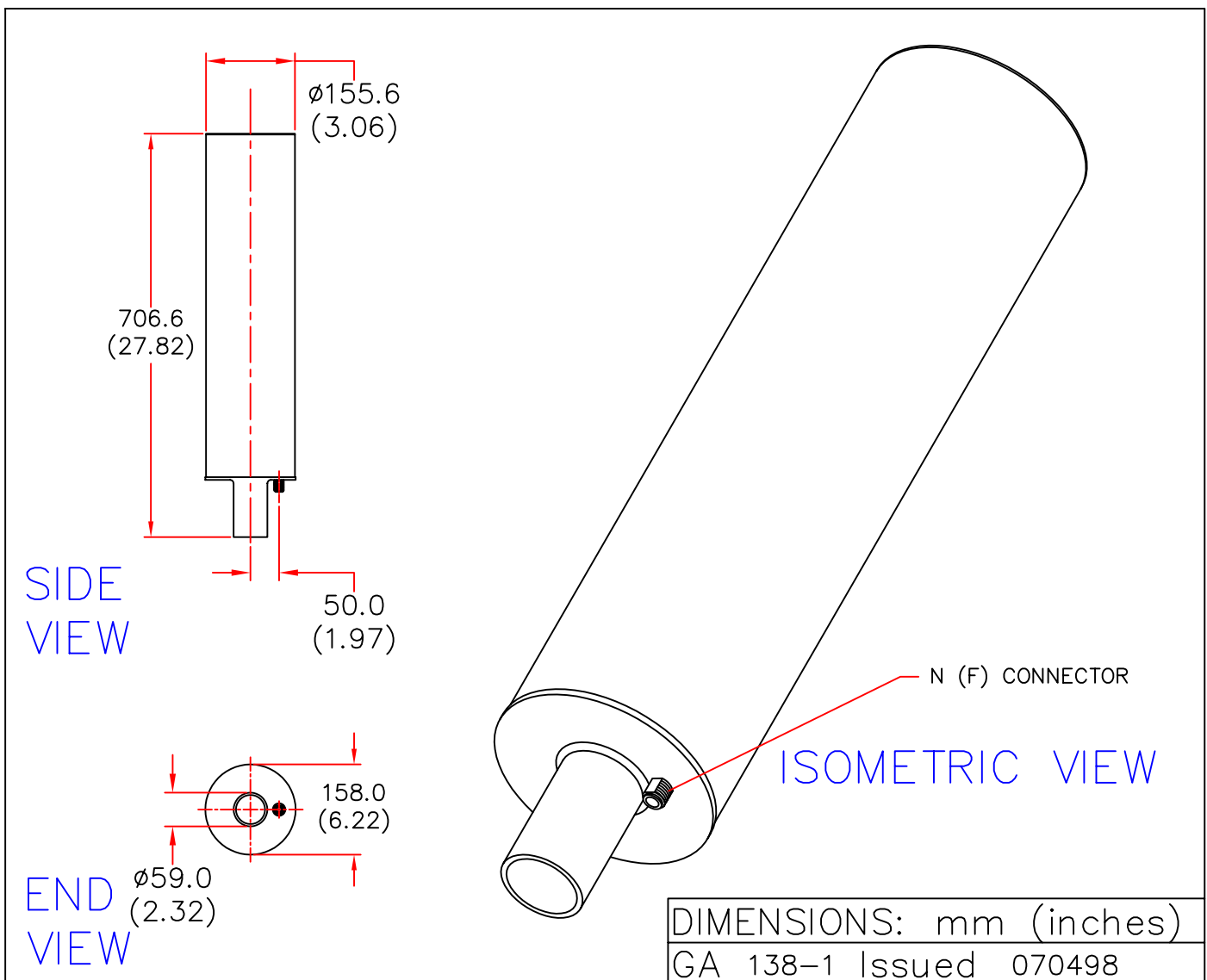
EUROPEAN ANTENNAS



EXTENDED PERFORMANCE OMNI

MODEL: XPO7R-1500/138

FREQUENCY: 1.45GHz – 1.55GHz	GAIN: 7 dBiC
POLARISATION: R H Circular	BEAMWIDTH: 360° x 20°
AXIAL RATIO: 3dB Typ	VSWR: 1.5:1
POWER RATING: 10W	FRONT TO BACK: N/A
TEMPERATURE: -20°C to +50°C	MASS: 4Kg / 8.8lbs
RADOME: Glass Fibre / Gloss White	WIND LOADING: 33.31lbs / 15.14Kg @ 100mph



EUROPEAN ANTENNAS LTD.

TEL: +44 (0)1638 731888

LAMBDA HOUSE, CHEVELEY,
NEWMARKET, SUFFOLK, CB8 9RG,
UNITED KINGDOM.

FAX: +44 (0)1638 731999

European Antennas Ltd. has a policy of continuous development and therefore stress that the data contained on this sheet should be used for guidance only.