



# EUROPEAN ANTENNAS

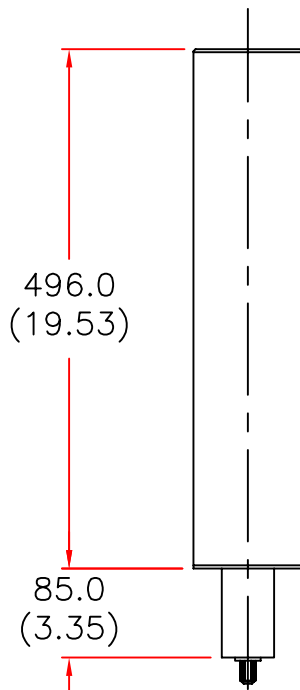


## MEDIUM GAIN OMNI ANTENNA

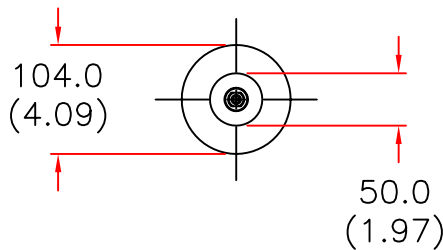
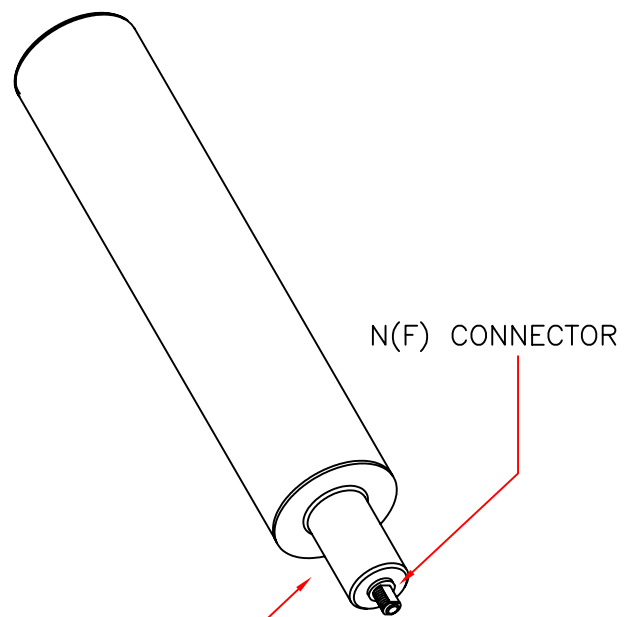
MODEL: RC07-2460/135

FREQUENCY: 2.40 – 2.55 GHz	GAIN: 7 dBiC
POLARISATION: RH CIRCULAR	BEAMWIDTH: 20° x 360°
AXIAL RATIO: 1 – 3 dB	VSWR: 1.5 : 1 into 50 OhmS
POWER RATING: 10 W	FRONT TO BACK: N/A
TEMPERATURE: -20°C to +50°C	MASS: 900 g
RADOME: GLOSS WHITE	WIND LOADING: 5.3Kg/11.6lbs @100mph

SIDE VIEW



ISOMETRIC VIEW



END VIEW

MOUNTING VIA SPIGOT  
(MOUNTING KIT AVAILABLE)

DIMENSIONS: mm (inches)	
GA 135-1	Issued 211196

EUROPEAN ANTENNAS LTD.

TEL: +44 (0)1638 731888

LAMBDA HOUSE, CHEVELEY,  
NEWMARKET, SUFFOLK, CB8 9RG,  
UNITED KINGDOM

FAX: +44 (0)1638 731999

European Antennas Ltd has a policy of continuous development and therefore stress that the data contained on this sheet should be used for guidance only.