

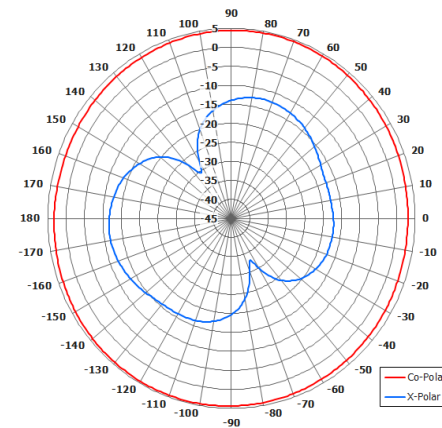
RCO4-3.3/2138/LDS

COBHAM

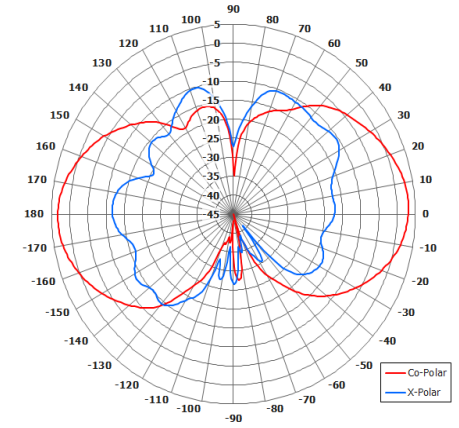
Omni antenna

The most important thing we build is trust

- Pattern -Omni Directional
- Right Hand Circular Polarised
- Suitable for Multiple Applications
- Suitable for Outdoor Applications
- Rugged
- Lightning Protection



Azimuth Pattern



Elevation Pattern

ELECTRICAL

Frequency	3.18 - 3.41 GHz
Gain	4 dBiC Typ
Polarisation	Right Hand Circular
Beamwidth	360° (Az) x 35° (El) Approx
Axial Ratio	3.0 dB Typ
VSWR	2:1 typical
Power Rating	10 W
Front to Back	N/A
Electrical Tilt	5° Up Typ

MECHANICAL

Standard Finish	White
Mass	660g (1.5 lbs)
Temperature	-20° to +50°C
Wind Loading	3.2 Kg (6.9 lbs) @ 100mph

MOUNTING OPTIONS

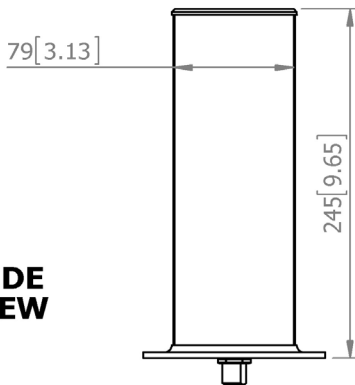
Kits Available	N/A
See separate data sheets	

ADDITIONAL NOTES

Issued 130214

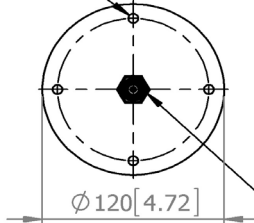
For further information please contact:

Cobham Antenna Systems, Microwave Antennas
 Lambda House, Cheveley,
 Newmarket, Suffolk CB8 9RG, UK.
 Tel +44 (0)1638 732 177
 Fax +44 (0) 1638 731999
 Email newmarket.sales@cobham.com

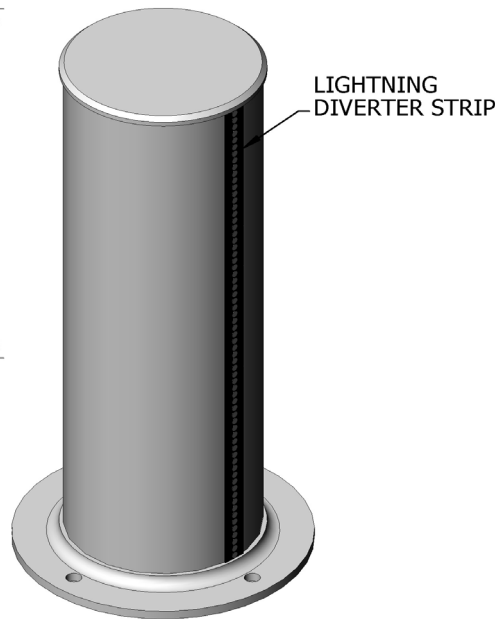


SIDE VIEW

4 OFF $\phi 6.5$ HOLES
 THRO' EQUI SPACED
 ON 100 PCD



BASE VIEW



LIGHTNING DIVERTER STRIP

N(F) CONNECTOR

GA: 2138/LDS

European Antennas Limited trading as Cobham Antenna Systems, Microwave Antennas

European Antennas Limited has a policy of continuous development and stress that the information provided is a guide only and does not constitute an offer or contract or part thereof. Whilst every effort is made to ensure the accuracy of the information contained in this brochure, no responsibility can be accepted for any errors or omissions.

The copyright of antenna designs and images is copyright protected and owned by European Antennas Limited.
 ©European Antennas Limited