



EUROPEAN ANTENNAS

Excellence through design
Creative in concept

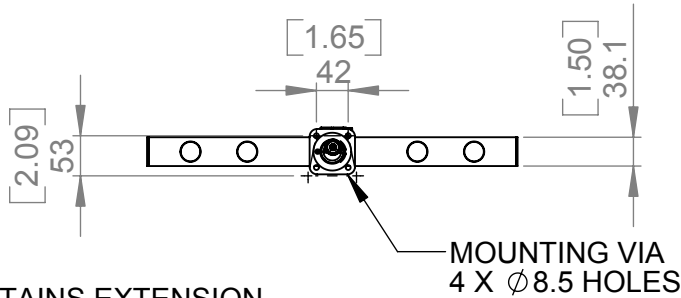
CEILING MOUNT KIT

MODEL: PSA-50200-LP CEILING MOUNT KIT/116A

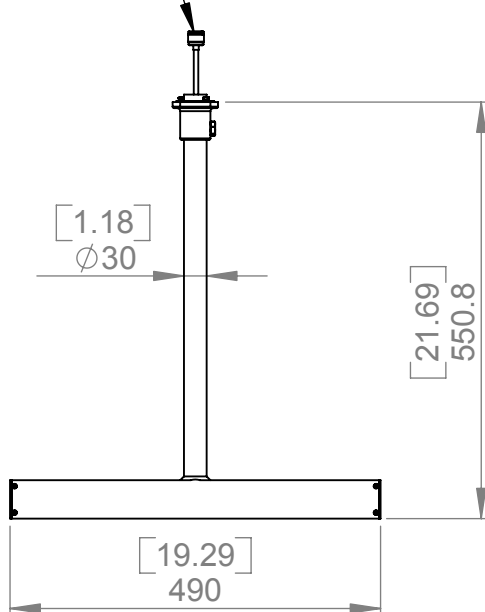
DESIGNED TO FIT 1421B ANTENNAS

MOUNTING:	VIA Ø8.5 HOLES	MATERIAL:	ALUMINIUM
EL. ADJUSTMENT:	NONE	FINISH:	PAINTED RAL 9002
AZ ADJUSTMENT:	360°	MASS:	1.8 Kg / 4.0 lbs

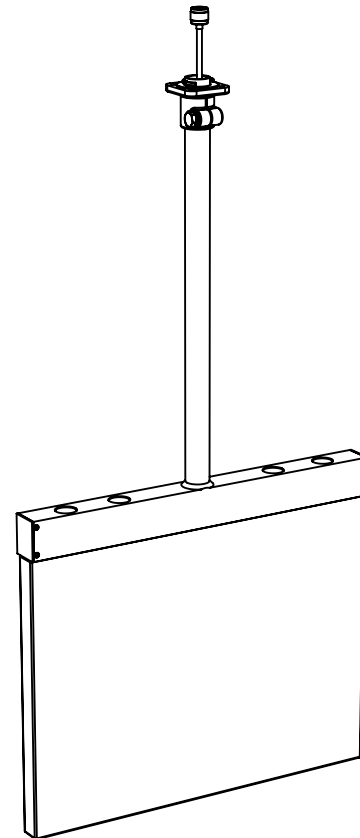
TOP VIEW



CONTAINS EXTENSION
CABLE TERMINATED
WITH N(M) CONNECTOR



FRONT VIEW



PICTORIAL VIEW
(SHOWN FITTED TO 1421B
ANTENNA)

GA:116A-1 Issued: 030707 DIMENSIONS: mm (inches) M

EUROPEAN ANTENNAS LTD.
LAMBDA HOUSE, CHEVELEY
NEWMARKET, SUFFOLK, CB8 9RG,
UNITED KINGDOM



Certificate No 9268

Tel: +44 (0)1638 731888
Fax: +44 (0)1638 731999
E-Mail: sales@european-antennas.co.uk
Website: www.european-antennas.co.uk