



EUROPEAN ANTENNAS

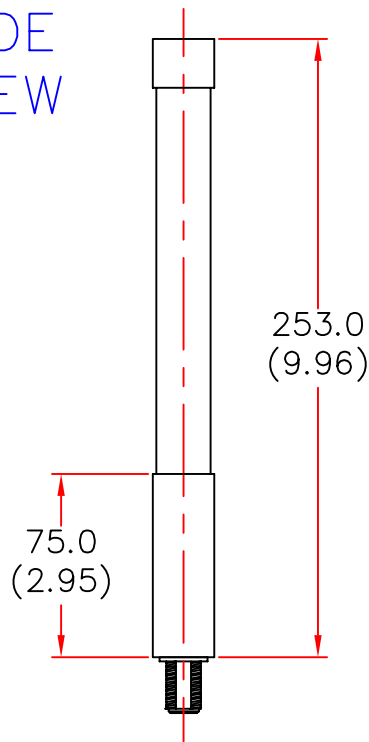


EXTENDED PERFORMANCE OMNI ANTENNA

MODEL: 0A2-HP-2.0/1291

FREQUENCY: 1.65 – 3.00 GHz	GAIN: 2 dBi Typical
POLARISATION: Linear (Vertical)	BEAMWIDTH: 360° x 80° Approx
CROSS POLAR: 15 – 20 dB	VSWR: 2 : 1
POWER RATING: 25 W	FRONT TO BACK: N/A
TEMPERATURE: -20°C to +50°C	MASS: 150 g/5.4 oz.
RADOME: Matt Black	WIND LOADING: 0.9Kg/2.1lbs @100mph

SIDE
VIEW

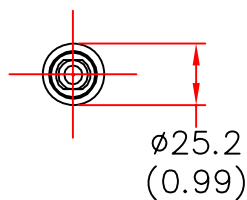


ISOMETRIC VIEW

MOUNTING VIA 25.2
(0.99) SPIGOT

N(F) CONNECTOR

END
VIEW



DIMENSIONS: mm (inches)

GA 1291-1 Issued 101006

EUROPEAN ANTENNAS LTD.

TEL: +44 (0)1638 731888

LAMBDA HOUSE, CHEVELEY,
NEWMARKET, SUFFOLK, CB8 9RG,
UNITED KINGDOM.

FAX: +44 (0)1638 731999

European Antennas Ltd. has a policy of continuous development and therefore stress that the data contained on this sheet should be used for guidance only.