

SA11-120-1.3V/1384

Sector Antenna



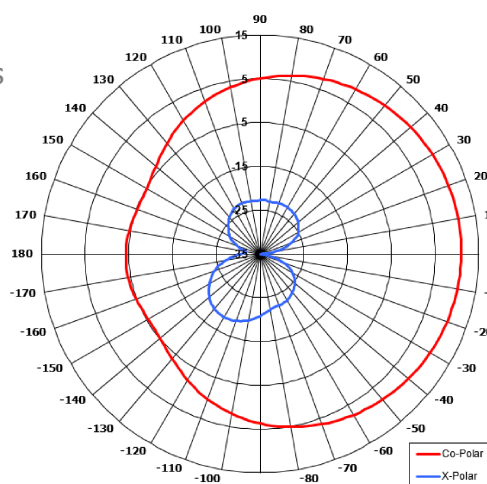
Key Features

Designed for COFDM applications

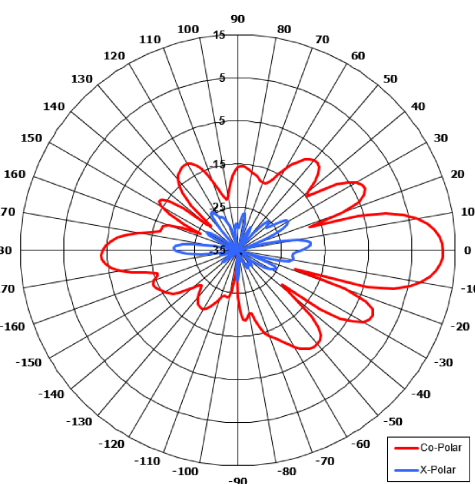
Suitable for multiple applications

Wideband performance

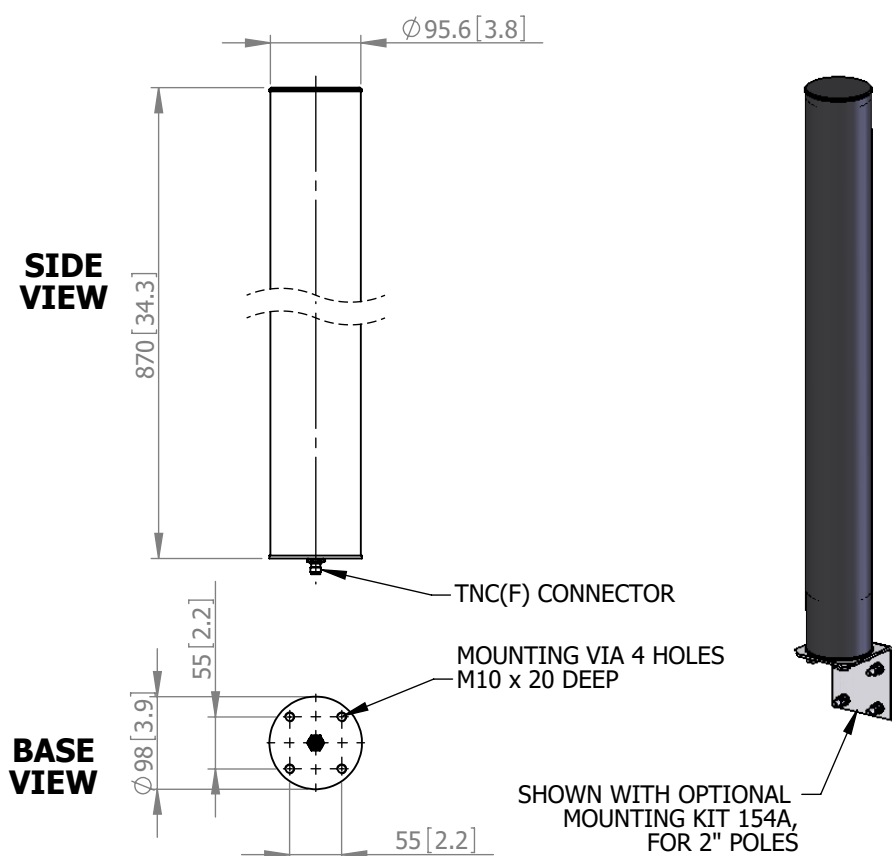
Rugged compact design



Azimuth Polar Plot



Elevation Polar Plot



ELECTRICAL

| | |
|---------------|---------------------------|
| Frequency: | 1.15 to 1.40 GHz |
| Gain: | 11.0 dBi Typ. |
| Polarisation: | Vertical |
| Beamwidth: | 120° (Az) x 18° (El) Typ. |
| Cross Polar: | >25 dB Typ. |
| VSWR: | 2:1 Max, 1.5:1 Typ. |
| Power Rating: | 50 W |

MECHANICAL

| | |
|------------------|-------------------|
| Standard Finish: | Black |
| Mass: | 1.6 Kg / 3.52 lbs |
| Temperature: | -40 to +60°C |
| Wind Loading: | 108 N @ 100 mph |

MOUNTING OPTIONS

| | |
|--------------------------|------|
| Kits Available: | 154A |
| See Separate Data Sheets | |

DS: 1384-5 Issued: 250121
Dimensions: mm [inches]