

# ABA-2.3V/1964

Aerodynamic Blade Antenna

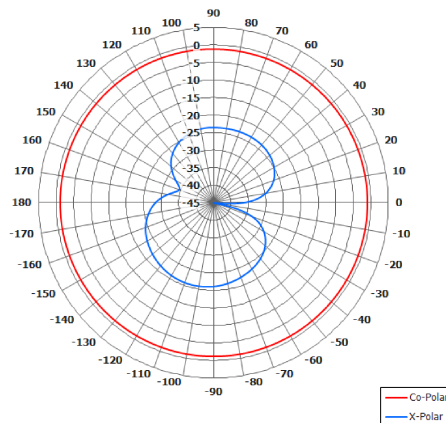


## Key Features

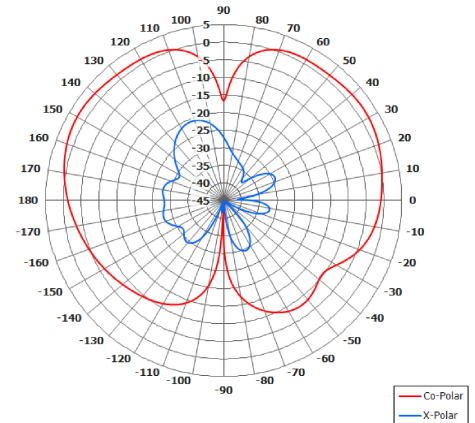
Pattern - Omni Directional

Suitable for Telemetry

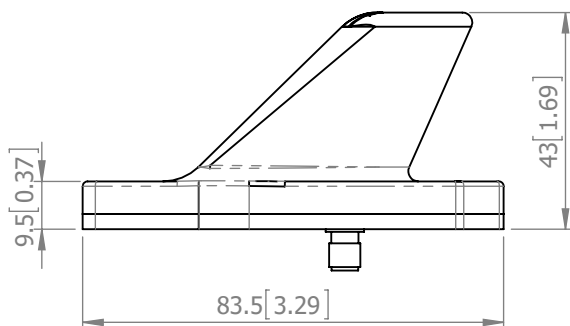
applications Rugged



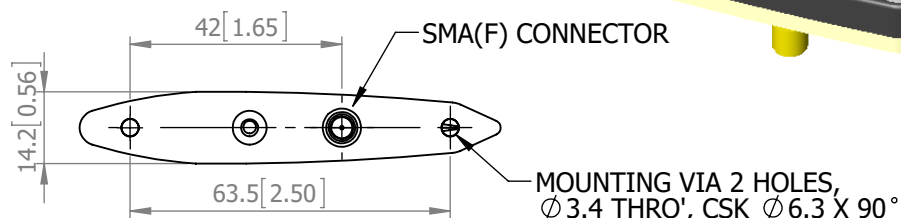
Azimuth Polar Plot  
(measured on  $\varnothing$  240mm ground plane)



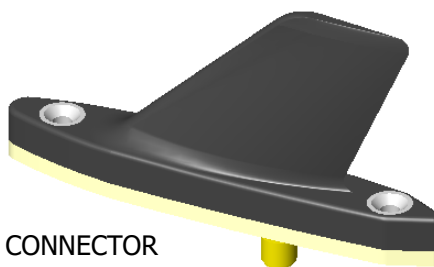
Elevation Polar Plot  
(measured on  $\varnothing$  240mm ground plane)



SIDE  
VIEW



BASE  
VIEW



## ELECTRICAL (measured on $\varnothing$ 240mm GP)

|                  |                      |
|------------------|----------------------|
| Frequency:       | 2.2 - 2.4 GHz        |
| Gain:            | 0-3 dBi              |
| Polarisation:    | Linear (Vertical)    |
| Beamwidth:       | 360° (Az) x 70° (El) |
| Cross Polar:     | >20 dB               |
| VSWR:            | 2:1                  |
| Power Rating:    | 10 W                 |
| Front to Back:   | N/A                  |
| Electrical Tilt: | 30° Approx.          |

## MECHANICAL

|                 |                |
|-----------------|----------------|
| Standard Finish | Matt Black     |
| Mass:           | 20 g (0.70 oz) |
| Temperature:    | -50° to +70°C  |

## MOUNTING OPTIONS

|                          |      |
|--------------------------|------|
| Kits Available:          | None |
| See Separate Data Sheets |      |

GA: 1964-1 Issued: 190716  
Dimensions: mm [inches] X (H,M,L)

Chelton Limited has a policy of continuous development and stress that the information provided is a guide only and does not constitute an offer or contract or part thereof. Whilst every effort is made to ensure the accuracy of the information contained in this brochure, no responsibility can be accepted for any errors or omissions.

The copyright of antenna designs and images is copyright protected and owned by Chelton Limited.  
©Chelton Limited

For further information please contact:

Chelton Limited,  
Lambda House, Cheveley,  
Newmarket, Suffolk CB8 9RG, UK.  
T: +44 (0)1638 732 177  
E: newmarket.sales@chelton.com  
W: www.chelton.com/microwave