

LPA7-57R/216

Low Profile Antenna



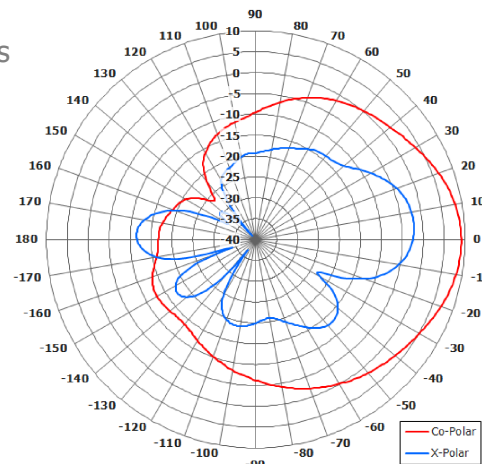
Key Features

Designed for Security Applications

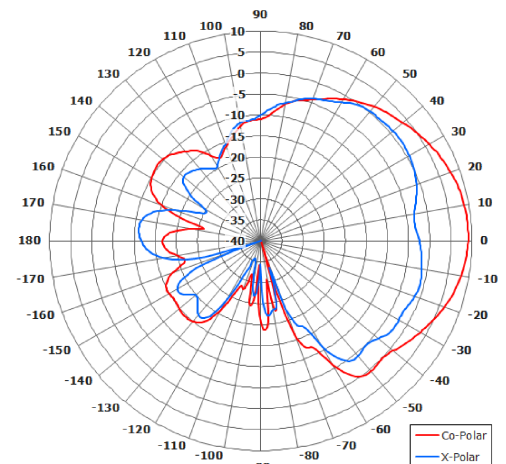
Right Hand Circular

Low Profile

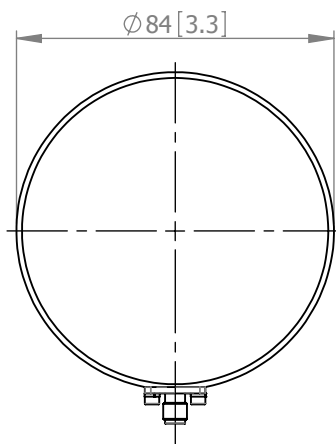
Lightweight



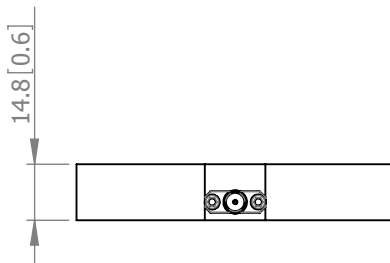
Azimuth Polar Plot



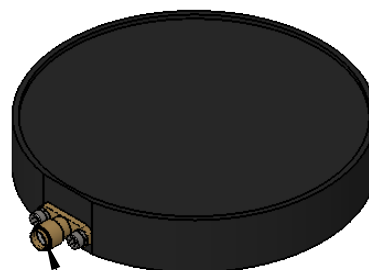
Elevation Polar Plot



PLAN VIEW



SIDE VIEW



SMA(F)
CONNECTOR

ELECTRICAL

Frequency:	5.4 - 6.0 GHz
Gain:	8.8 dBiC
Polarisation:	Right Hand Circular
Beamwidth:	50° (Az) x 50° (El) Approx
VSWR:	1.5:1
Power Rating:	5 W
Front to Back:	>20 dB
Electrical Tilt:	N/A

MECHANICAL

Standard Finish:	Matt Black
Mass:	150 g / 5.3 oz
Temperature:	-20° to +50°C
Wind Loading:	8.5 N @ 100 mph

MOUNTING OPTIONS

Kits Available:	N/A
-----------------	-----

See Separate Data Sheets

DS: 0216-2 Issued: 260417
Dimensions: mm [inches] M

Chelton Limited has a policy of continuous development and stress that the information provided is a guide only and does not constitute an offer or contract or part thereof. Whilst every effort is made to ensure the accuracy of the information contained in this brochure, no responsibility can be accepted for any errors or omissions.

The copyright of antenna designs and images is copyright protected and owned by Chelton Limited.
©Chelton Limited

For further information please contact: Chelton Limited, Lambda House, Cheveley, Newmarket, Suffolk CB8 9RG, UK.
T: +44 (0)1638 732 177
E: newmarket.sales@chelton.com
W: www.chelton.com/microwave