

MSA3-1.3V-4.8V-8.4V/2060

Directional Antenna



Key Features

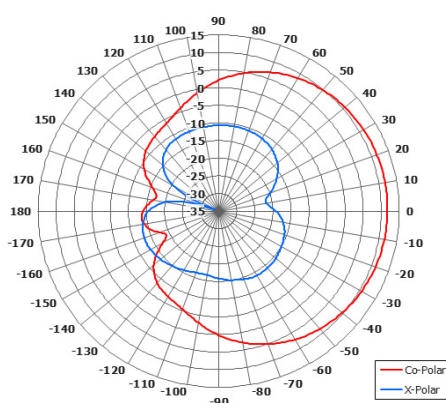
Multi-band, 120degree Sectors

Designed for Multiple Band Operation

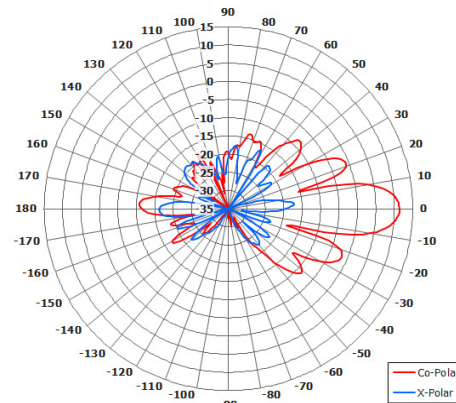
Suitable for Outdoor Applications

Adjustable Mounting Kit Included

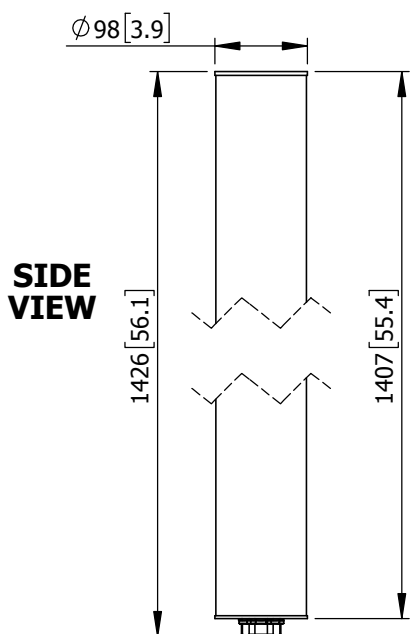
Option to Integrate Customer Supplied Components



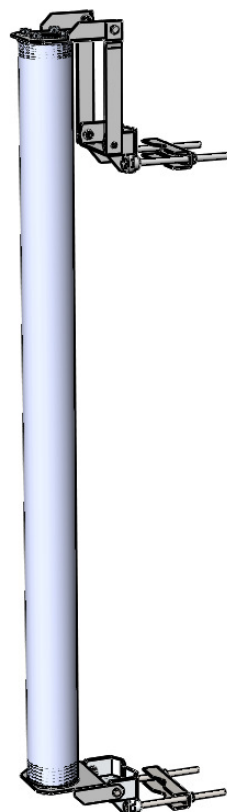
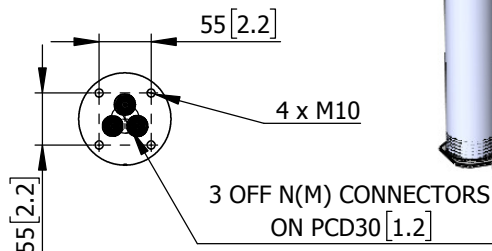
Typical Azimuth Polar Plot



Typical Elevation Polar Plot



BASE VIEW



ELECTRICAL - Antenna Performance Only

| | | | |
|------------------|----------------------|----------------------|----------------------|
| Frequency: | 1.15-1.40GHz | 4.4-5.1GHz | 8.1-8.6GHz |
| Gain: | 11.1dBi Typ | 11.5dBi Typ | 11.6dBi Typ |
| Polarisation: | Linear (Vertical) | | |
| Beamwidth: | 120° (Az) x 17° (El) | 117° (Az) x 13° (El) | 127° (Az) x 16° (El) |
| Cross Polar: | 26 dB Min | 20 dB Min | 21 dB Min |
| VSWR: | 2:1 | 2:1 | 2:1 |
| Power Rating: | 30 W | 30 W | 30 W |
| Front to Back: | 15dB Min | 15dB Min | 15dB Min |
| Electrical Tilt: | 0° | 0° | 1° |

MECHANICAL

| | |
|------------------|--------------------------------|
| Standard Finish: | White |
| Mass: | 2.6Kg / 5.73 lbs |
| Temperature: | -40° to +50°C |
| Wind Loading: | 19.44 Kg / 42.76 lbs @ 100 mph |

MOUNTING OPTIONS

Kits Available: 051A included
 See Separate Data Sheets
 Incorporating Customer Supplied Down Converters

DS: 2060-1 Issued: 190815
 Dimensions: mm [inches] M

Chelton Limited has a policy of continuous development and stress that the information provided is a guide only and does not constitute an offer or contract or part thereof. Whilst every effort is made to ensure the accuracy of the information contained in this brochure, no responsibility can be accepted for any errors or omissions.

The copyright of antenna designs and images is copyright protected and owned by Chelton Limited.
 ©Chelton Limited

For further information please contact: Chelton Limited, Lambda House, Cheveley, Newmarket, Suffolk CB8 9RG, UK.
 T: +44 (0)1638 732 177
 E: newmarket.sales@chelton.com
 W: www.chelton.com/microwave