

# LPA7-2.1R/1710

**COBHAM**

## Directional Antenna

The most important thing we build is trust

Designed for Security Applications

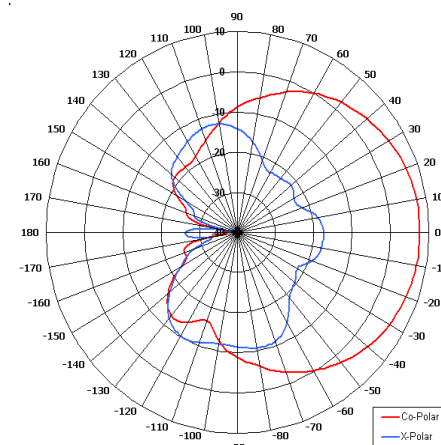
Suitable for Multiple Applications

Low Profile

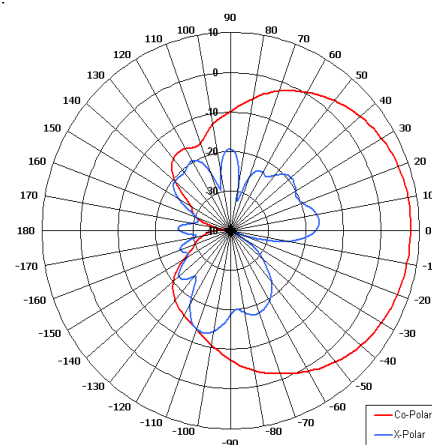
Pattern - Directional

Right Hand Circular Polarised

Connector Options



Azimuth Pattern



Elevation Pattern

### ELECTRICAL

Frequency	1.90 - 2.30 GHz
Gain	7.0 dBi Nom
Polarisation	Right Hand Circular
Beamwidth	75° (Az) x 75° (El) Approx
Cross Polar	3.0 dB Typ
VSWR	1.5:1 Typ. 2:1 Max
Power Rating	10 W
Front to Back	25 dB Typ

### MECHANICAL

Standard Finish	Matt Black
Mass	180 g (6.4 oz)
Temperature	-20° to +50°C
Wind Loading	1.88 Kg (4.14 lbs) @ 100 mph

### MOUNTING OPTIONS

Kits Available	N/A
See separate data sheets	

### ADDITIONAL NOTES

Issued 091210

For further information please contact:

Cobham Antenna Systems, Microwave Antennas

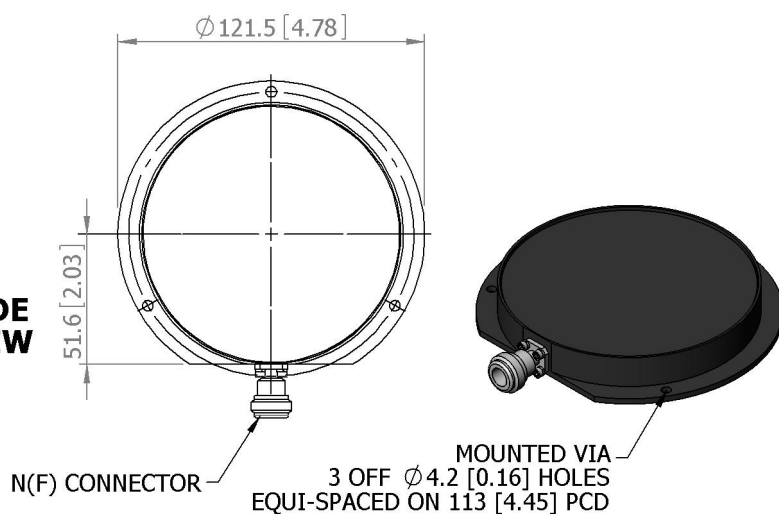
Lambda House, Cheveley,  
Newmarket, Suffolk CB8 9RG, UK.

Tel +44 (0)1638 732 177

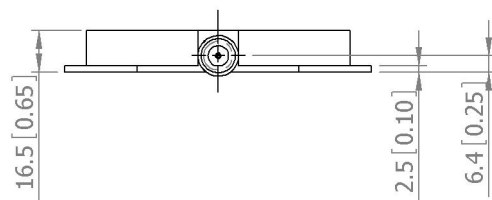
Fax +44 (0) 1638 731999

Email [newmarket.sales@cobham.com](mailto:newmarket.sales@cobham.com)

### SIDE VIEW



### BASE VIEW



**GA: 1710**

European Antennas Limited trading as Cobham Antenna Systems, Microwave Antennas

European Antennas Limited has a policy of continuous development and stress that the information provided is a guide only and does not constitute an offer or contract or part thereof. Whilst every effort is made to ensure the accuracy of the information contained in this brochure, no responsibility can be accepted for any errors or omissions.

The copyright of antenna designs and images is copyright protected and owned by European Antennas Limited.  
©European Antennas Limited