

SA12-110-2.4V/1480

COBHAM

Sector Antenna

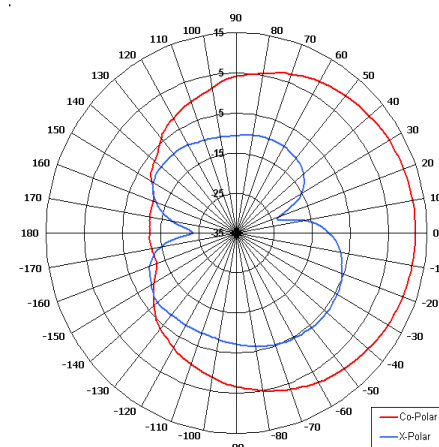
The most important thing we build is trust

Designed for COFDM Applications

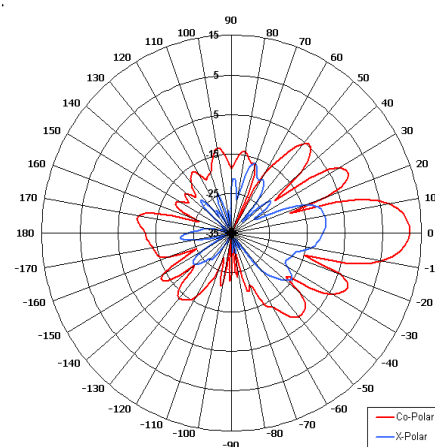
Suitable for Security Applications

Wide Band

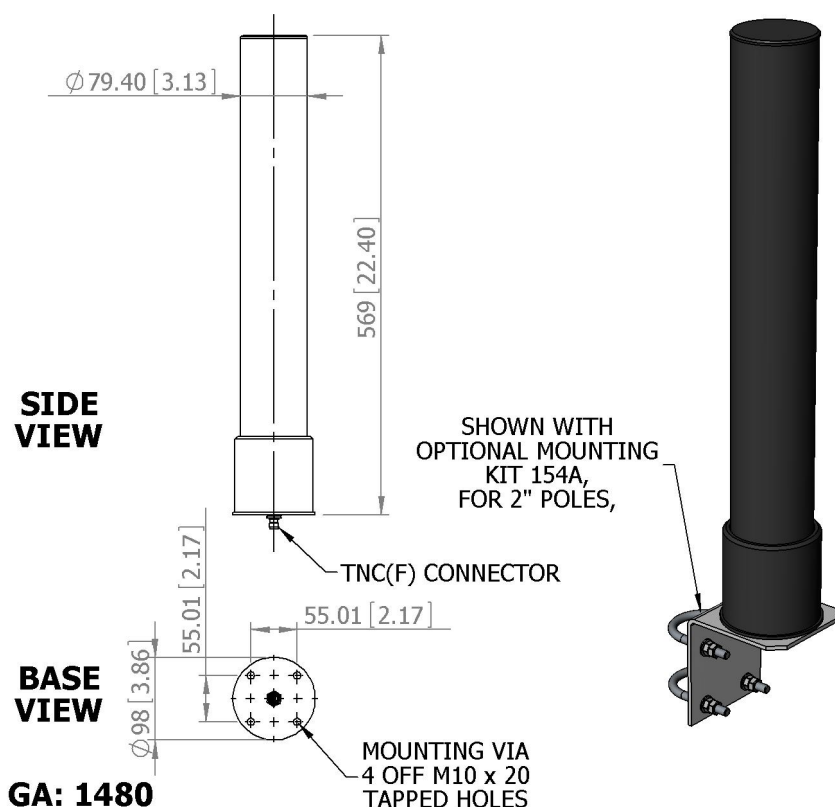
Rugged Design



Azimuth Pattern



Elevation Pattern



ELECTRICAL

Frequency	2.00 - 2.70 GHz
Gain	12 dBi Nom
Polarisation	Linear (Vertical)
Beamwidth	112° (Az) x 17° (El) Approx
Cross Polar	>20 dB Typ
VSWR	2:1 Max, <1.5:1 Typ
Power Rating	50 W
Front to Back	>20dB Typ

MECHANICAL

Standard Finish	Matt Black
Mass	1.3 Kg (2.86 lbs)
Temperature	-40° to +60°C
Wind Loading	8.5 Kg(18.8lbs) @ 100mph

MOUNTING OPTIONS

Kits Available	154A
See separate data sheets	

ADDITIONAL NOTES

Issued 200810

European Antennas Limited trading as Cobham Antenna Systems, Microwave Antennas

European Antennas Limited has a policy of continuous development and stress that the information provided is a guide only and does not constitute an offer or contract or part thereof. Whilst every effort is made to ensure the accuracy of the information contained in this brochure, no responsibility can be accepted for any errors or omissions.

The copyright of antenna designs and images is copyright protected and owned by European Antennas Limited.
©European Antennas Limited

For further information please contact:

Cobham Antenna Systems, Microwave Antennas

Lambda House, Cheveley,
Newmarket, Suffolk CB8 9RG, UK.

Tel +44 (0)1638 732 177

Fax +44 (0) 1638 731999

Email antennasystems.ma@cobham.com