

MULTI SECTOR ANTENNA MSA5-3.4V/1435



ELECTRICAL

FREQUENCY:	3.35 - 3.55 GHz
GAIN:	13 dBi
POLARISATION:	Linear (Vertical)
BEAMWIDTH:	Approx. 80° (Az) x 16.5° (El) Approx.
CROSS POLAR:	20 dB
VSWR:	1.5:1
POWER RATING:	10 W
FRONT TO BACK:	>20dB

MECHANICAL

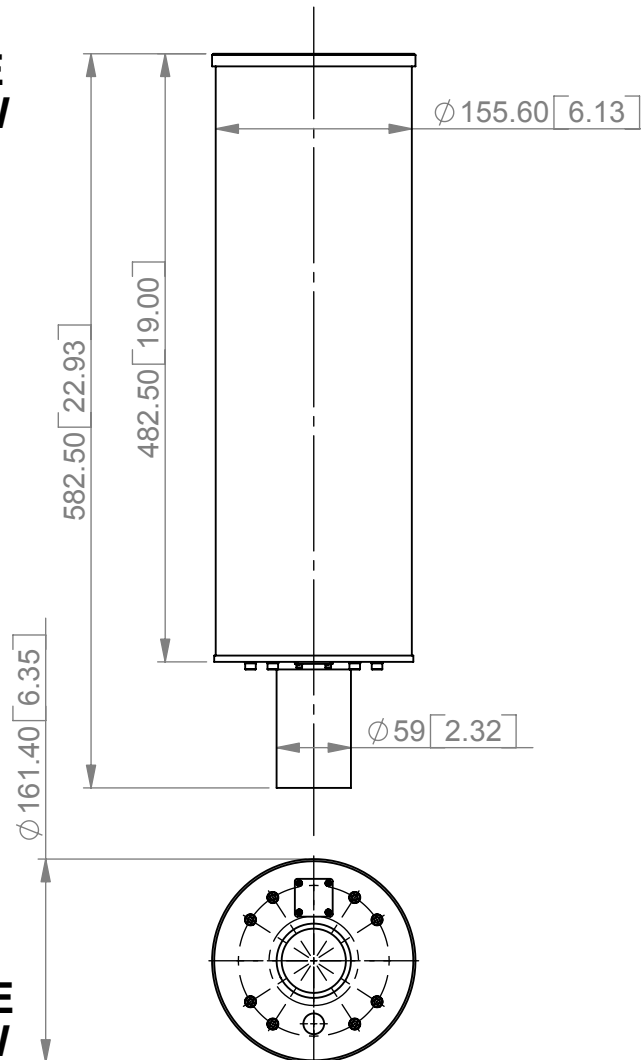
STANDARD FINISH:	Gloss white, black anodised base
MASS:	3 kg / 6.6 lbs
TEMPERATURE:	-20° to +50°C
WIND LOADING:	12.18 kg / 26.79 lbs @ 100 mph

MOUNTING OPTIONS

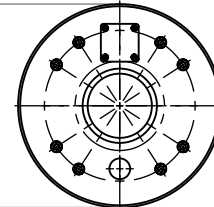
KITS AVAILABLE:	N/A
See Separate Data Sheets	

GA: 1435-2 Issued: 101207
DIMENSIONS: mm [inches]

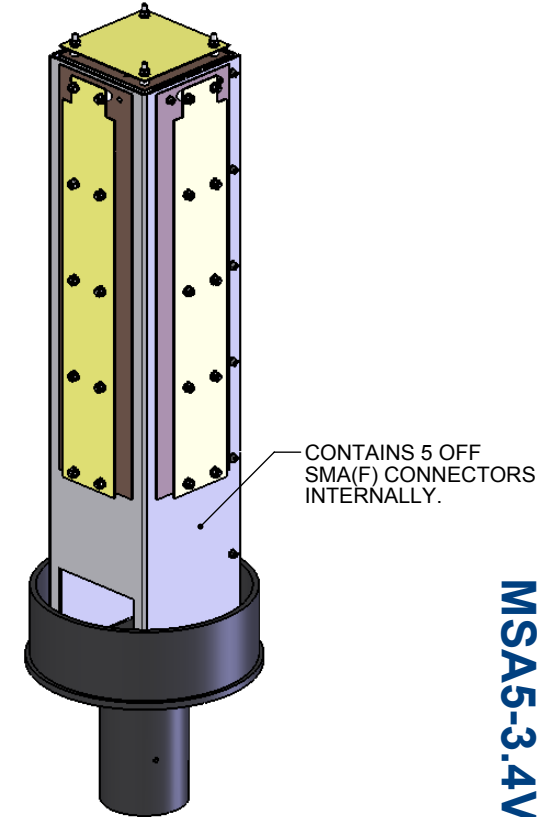
SIDE VIEW



BASE VIEW



ISOMETRIC VIEW



MSA5-3.4V/1435

European Antennas Ltd. has a policy of continuous development and therefore stress that the data contained on this sheet should be used for guidance only.

European Antennas Ltd. is part of the Cobham Antennas Division



Certificate No 9268

European Antennas Ltd
Lambda House, Cheveley
Newmarket, Suffolk, CB8 9RG, UK
Tel: +44 (0)1638 731888
sales@european-antennas.co.uk
www.european-antennas.co.uk