

SECTOR ANTENNA SA9-120-1.3V/1445



ELECTRICAL

FREQUENCY:	1.20 - 1.45 GHz
GAIN:	9 dBi Nom.
POLARISATION:	Linear (Vertical)
BEAMWIDTH:	c.120° (Az) x c.36° (El)
CROSS POLAR:	>20 dB Typ.
VSWR:	2:1 Max., 1.5:1 Typ.
POWER RATING:	50 W
FRONT TO BACK:	>10dB Typ.

MECHANICAL

STANDARD FINISH:	Matt Black
MASS:	1.3 kg / 2.86 lbs
TEMPERATURE:	-40° to +60°C
WIND LOADING:	7.6 kg / 16.72 lbs @ 100 mph

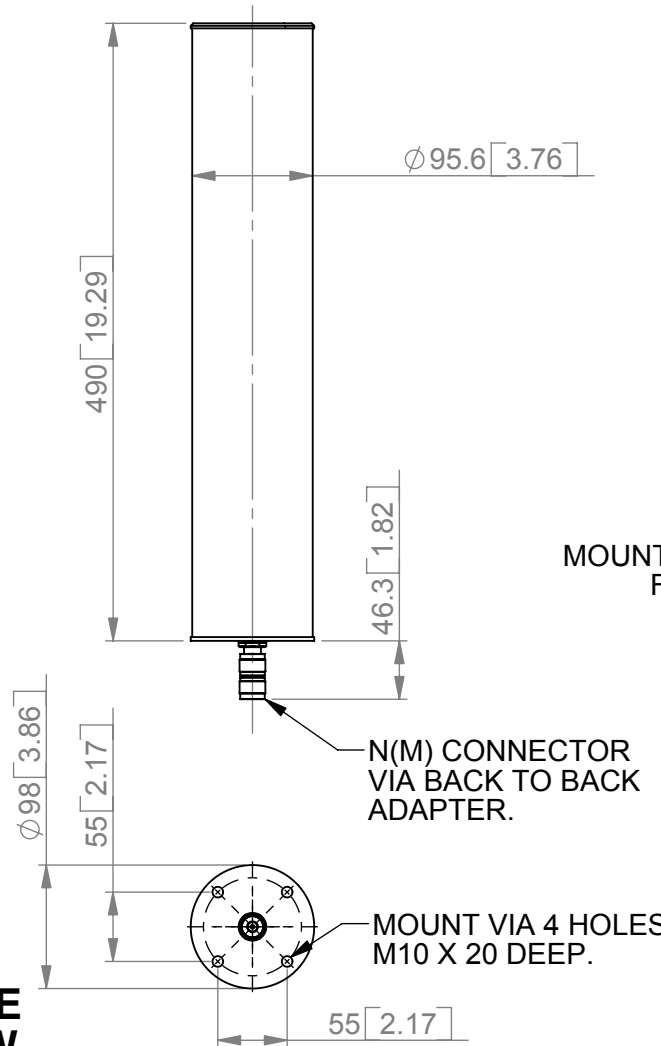
MOUNTING OPTIONS

KITS AVAILABLE: 154A & MK2/C

See Separate Data Sheets

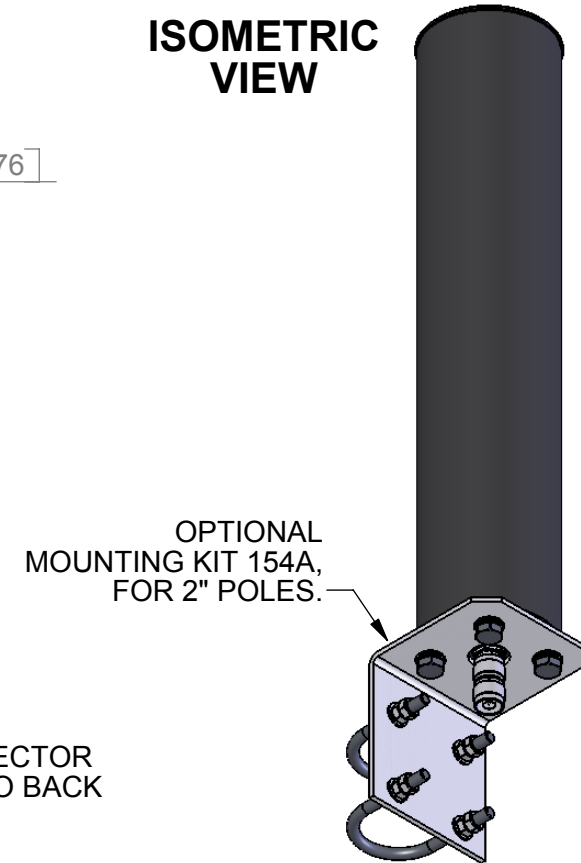
GA: 1445-3 Issued: 271107
DIMENSIONS: mm [inches]

SIDE VIEW



BASE VIEW

ISOMETRIC VIEW



SA9-120-1.3V/1445

European Antennas Ltd. has a policy of continuous development and therefore stress that the data contained on this sheet should be used for guidance only.

European Antennas Ltd. is part of the Cobham Antennas Division



Certificate No 9268

European Antennas Ltd
Lambda House, Cheveley
Newmarket, Suffolk, CB8 9RG, UK
Tel: +44 (0)1638 731888
sales@european-antennas.co.uk
www.european-antennas.co.uk