



# EUROPEAN ANTENNAS

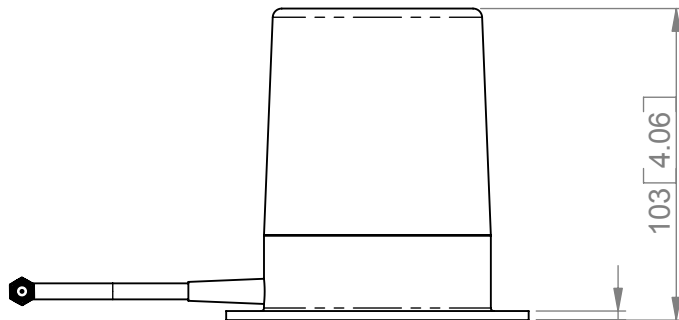
Excellence through design  
Creative in concept

## THURAYA PASSIVE VEHICLE ANTENNA (LOW ELEVATION)

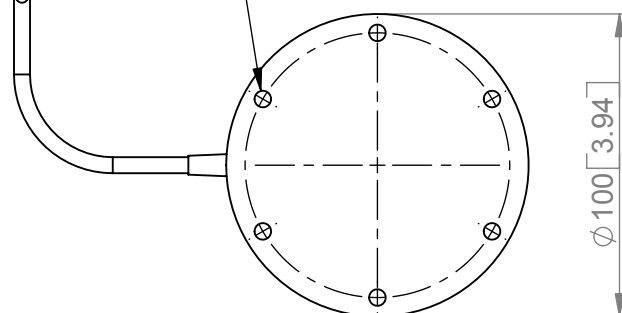
### MODEL: HOA2-1.6L/1404

<b>FREQUENCY:</b>	1.52 - 1.66 GHz	<b>GAIN:</b>	3.0 dBiC (including cable loss)
<b>POLARISATION:</b>	Left Hand Circular	<b>BEAMWIDTH:</b>	360° (Az) x 150° (Ei)
<b>AXIAL RATIO:</b>	3 dB Typical	<b>VSWR:</b>	<1.5:1 Max
<b>POWER RATING:</b>	20 W	<b>FRONT TO BACK:</b>	>20 dB
<b>TEMPERATURE:</b>	-40° to +50°C	<b>MASS:</b>	380 g / 13.4 oz Approx
<b>FINISH:</b>	Beige Radome, Alocrom Base	<b>WIND LOADING:</b>	1.2 Kg / 2.6 lbs @ 100 mph Approx

### SIDE VIEW

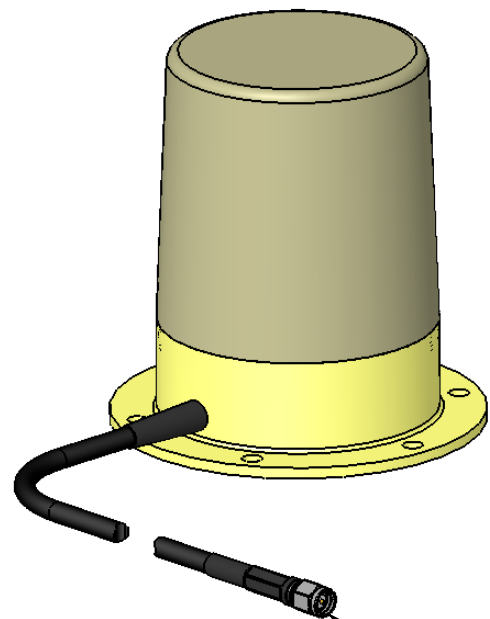


MOUNTED VIA  
6 OFF  $\varnothing 5.5$  [0.22] HOLES  
EQUI-SPACED ON  
87.5 [3.44] PCD.



### BASE VIEW

### ISOMETRIC VIEW



SMA(M) CONNECTOR  
WITH INTEGRAL  
CABLE 2.5m [98] LONG

GA: 1404-1 | Issued: 240107 | DIMENSIONS: mm [inches] | L

EUROPEAN ANTENNAS LTD.  
LAMBDA HOUSE, CHEVELEY  
NEWMARKET, SUFFOLK, CB8 9RG,  
UNITED KINGDOM



Certificate No 9268

Tel: +44 (0)1638 731888  
Fax: +44 (0)1638 731999  
E-Mail: sales@european-antennas.co.uk  
Website: www.european-antennas.co.uk