

CIRCULARLY POLARISED OMNI ANTENNA RC09-3700/1343



ELECTRICAL

FREQUENCY:	3.6 - 3.8 GHz
GAIN:	8.5 dBiC Nominal
POLARISATION:	Right Hand Circular
BEAMWIDTH:	360° (Az) x 12° (El) Approx.
AXIAL RATIO:	5 dB Typical
VSWR:	1.5:1 Typ., 1.67:1 Max.
POWER RATING:	10 W
FRONT TO BACK:	N/A

MECHANICAL

STANDARD FINISH:	Gloss White
MASS:	1.0 Kg / 2.2 lbs
TEMPERATURE:	-30° to +50°C
WIND LOADING:	7.9 Kg / 17.4 lbs @ 100 mph

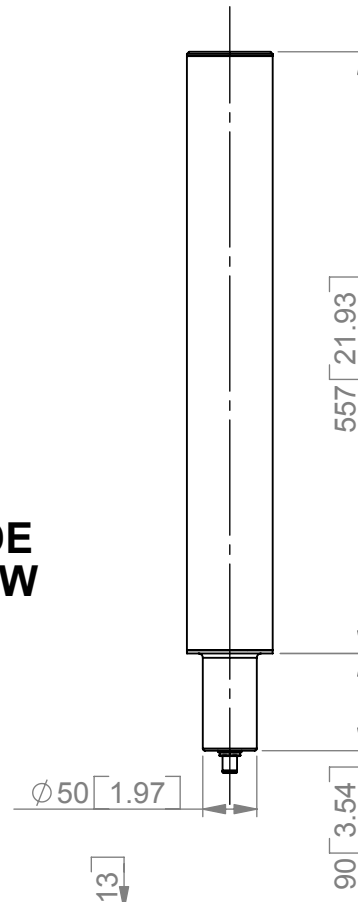
MOUNTING OPTIONS

KITS AVAILABLE: MK2/A

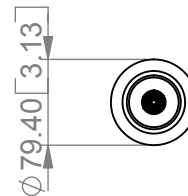
See Separate Data Sheets

GA: 1343-2 Issued: 020108
DIMENSIONS: mm [inches]

SIDE
VIEW



BASE
VIEW



ISOMETRIC
VIEW



RC09-3700/1343

European Antennas Ltd. has a policy of continuous development and therefore stress that the data contained on this sheet should be used for guidance only.

European Antennas Ltd. is part of the Cobham Antennas Division



Certificate No 9268

European Antennas Ltd
Lambda House, Cheveley
Newmarket, Suffolk, CB8 9RG, UK
Tel: +44 (0)1638 731888
sales@european-antennas.co.uk
www.european-antennas.co.uk