



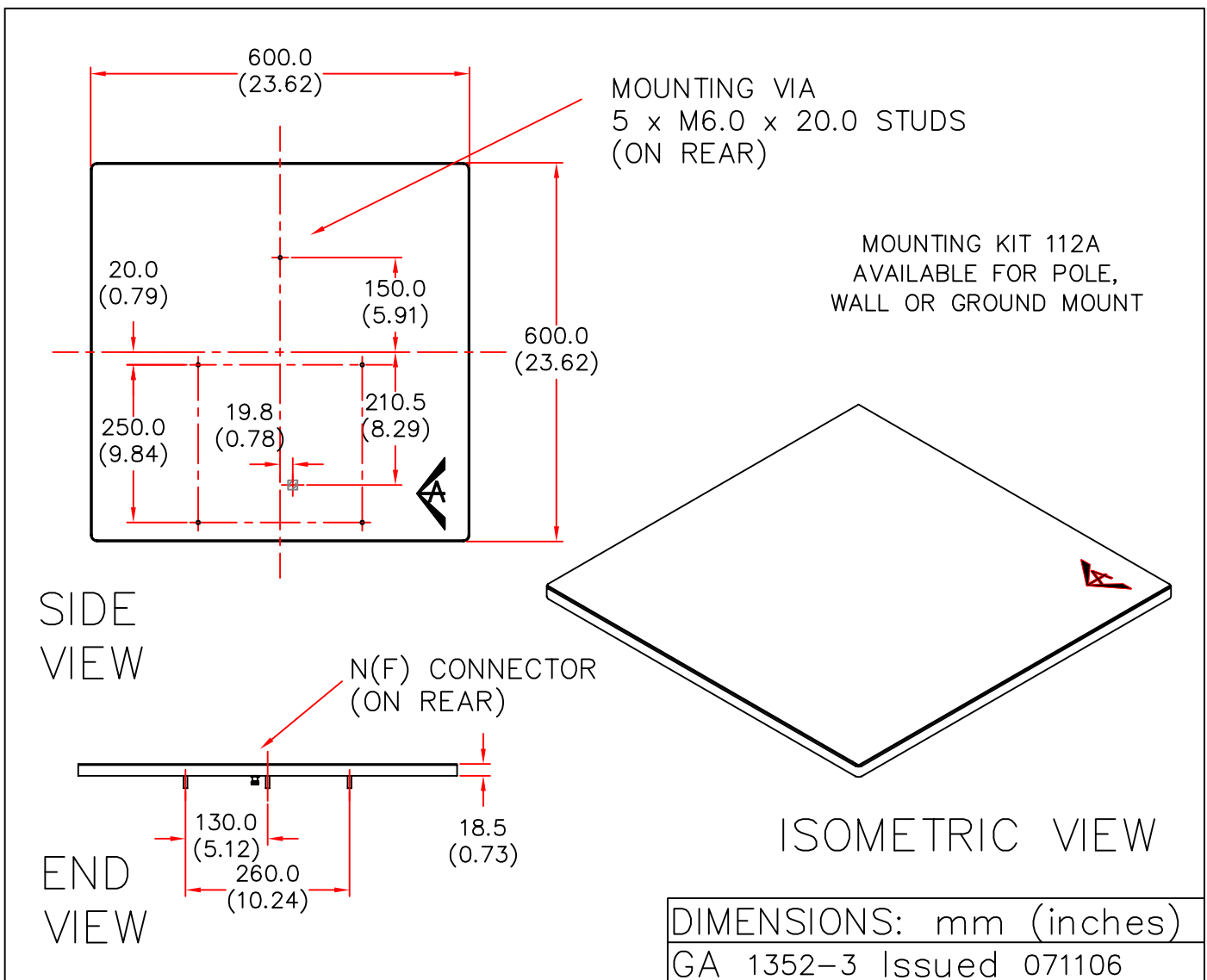
# EUROPEAN ANTENNAS



## FLAT PANEL ANTENNA

MODEL: FPA19-15L/1352

FREQUENCY: 1.52 – 1.56 GHz	GAIN: 17.8 dBi Peak
POLARISATION: L.H. Circular	BEAMWIDTH: 20° x 20°
AXIAL RATIO: 3 dB	VSWR: 1.5 : 1
POWER RATING: 25 W	FRONT TO BACK: 30 dB
TEMPERATURE: -20°C to +50°C	MASS: 4.52 Kg/9.94 lbs
RADOME: Glass Fibre/Gloss White	WIND LOADING: 58.4Kg/128.4lbs @100mph



EUROPEAN ANTENNAS LTD.

TEL: +44 (0)1638 731888

LAMBDA HOUSE, CHEVELEY,  
NEWMARKET, SUFFOLK, CB8 9RG,  
UNITED KINGDOM.

FAX: +44 (0)1638 731999

European Antennas Ltd. has a policy of continuous development and therefore stress that the data contained on this sheet should be used for guidance only.