



EUROPEAN ANTENNAS

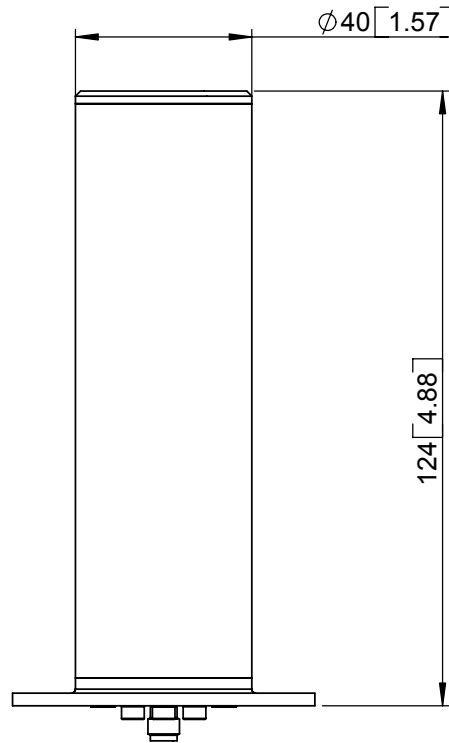
Excellence through design
Creative in concept

OMNI ANTENNA

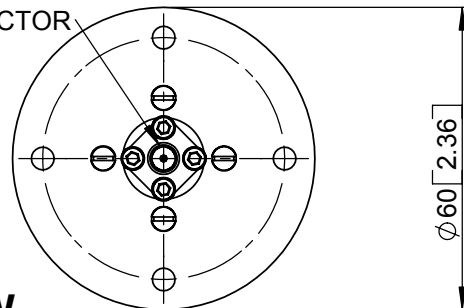
MODEL: OA7-14.25H/1295

FREQUENCY:	14.0-14.5 MHz	GAIN:	7 dBi TYP
POLARISATION:	Linear (Horizontal)	BEAMWIDTH:	360° (Az) x 12° (El) Approx.
CROSS POLAR:	20dB Min	VSWR:	2:5:1
POWER RATING:	50 W	FRONT TO BACK:	N/A
TEMPERATURE:	-20° to +50°C	MASS:	175g / 6.154ozs
FINISH:	Alocrom 1200, Black heatshrink	WIND LOADING:	0.692 Kg / 1.52 lbs @ 100 mph

SIDE VIEW



SMA(F) CONNECTOR



BASE VIEW



MOUNTED VIA 4 OFF
Ø4.5 (0.18) HOLES
ON A Ø48 P.C.D.

ISOMETRIC VIEW

GA: 1295-1 | Issued: 060206 | DIMENSIONS: mm (inches) | L

EUROPEAN ANTENNAS LTD.
LAMBDA HOUSE, CHEVELEY
NEWMARKET, SUFFOLK, CB8 9RG,
UNITED KINGDOM



Certificate No 9268

Tel: +44 (0)1638 731888
Fax: +44 (0)1638 731999
E-Mail: sales@european-antennas.co.uk
Website: www.european-antennas.co.uk

European Antennas Ltd. has a policy of continuous development and therefore stress that the data contained on this sheet should be used for guidance only.