



EUROPEAN ANTENNAS

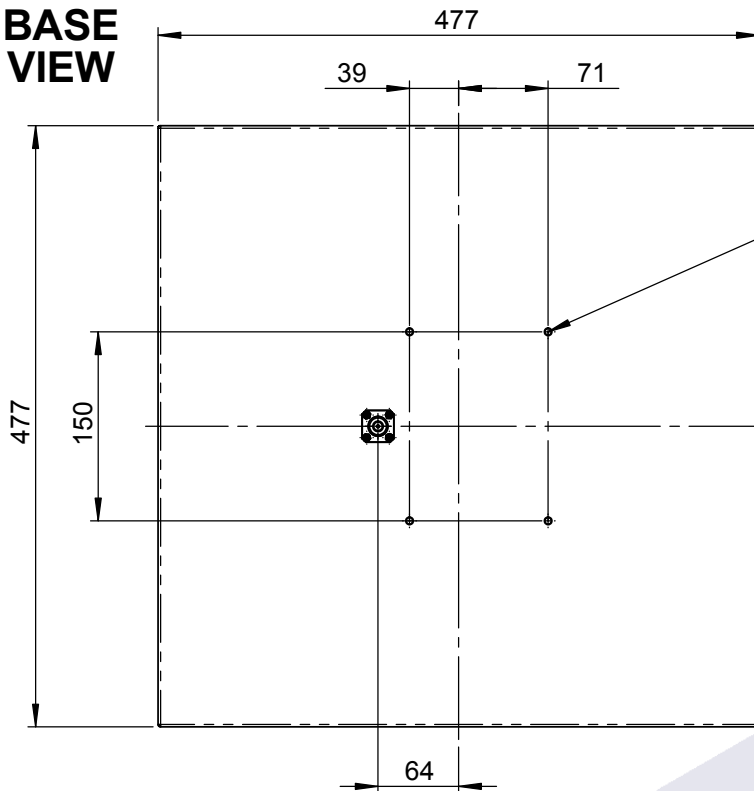
Excellence through design
Creative in concept

LOW PROFILE ANTENNA

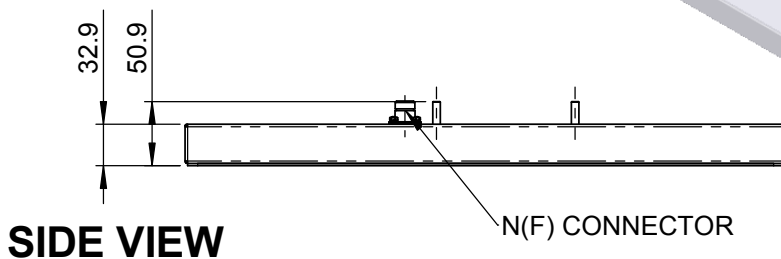
MODEL: LPA7-390R/1326

FREQUENCY:	385-400 MHz	GAIN:	7.8 dBi TYP
POLARISATION:	Right Hand Circular	BEAMWIDTH:	67° (Az) x 73° (El)
AXIAL RATIO:	5 dB Typical	VSWR:	<2.5:1 MAX <2:1 TYP
POWER RATING:	10 W	FRONT TO BACK:	>25 dB
TEMPERATURE:	-20° to +50°C	MASS:	1.8 Kg / 3.96 lbs
FINISH:	Alocrom 1200 / White Radome	WIND LOADING:	36.9 Kg / 81.2 lbs @ 100 mph

BASE VIEW

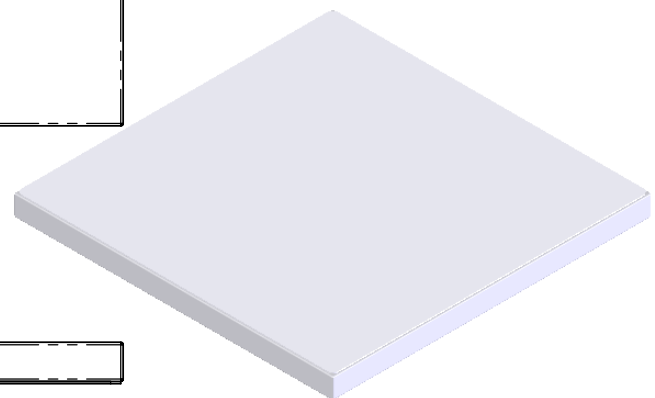


MOUNTED VIA
4 OFF M6 STUDS



SIDE VIEW

N(F) CONNECTOR



ISOMETRIC VIEW

GA: 1326-1 | Issued: 260606 | DIMENSIONS: mm (inches) | L

EUROPEAN ANTENNAS LTD.
LAMBDA HOUSE, CHEVELEY
NEWMARKET, SUFFOLK, CB8 9RG,
UNITED KINGDOM



Certificate No 9268

Tel: +44 (0)1638 731888
Fax: +44 (0)1638 731999
E-Mail: sales@european-antennas.co.uk
Website: www.european-antennas.co.uk