

RC010-3500-D1/1185

COBHAM

Omni Antenna

The most important thing we build is trust

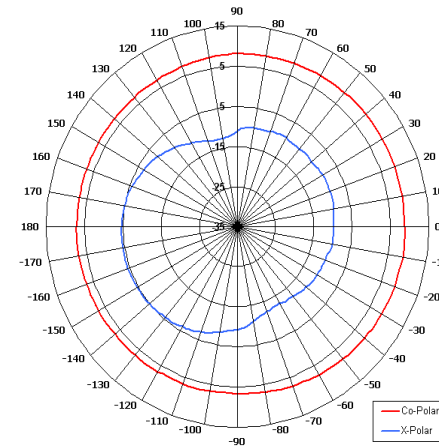
Designed for Broadcast Applications

Right Hand Circular Polarised

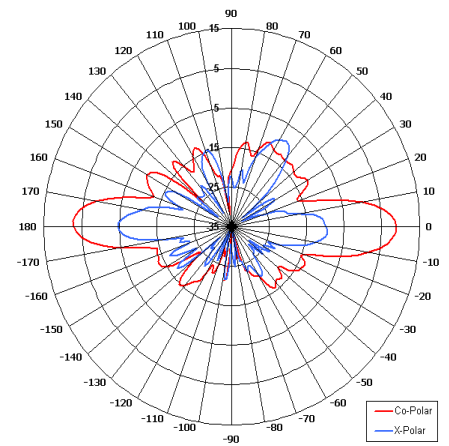
High Gain

Low Profile

Suitable for Outdoor Applications

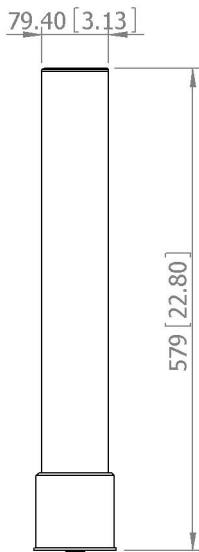


Azimuth Pattern



Elevation Pattern

SIDE VIEW

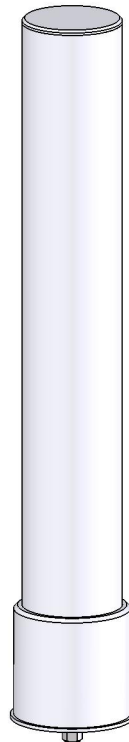


BASE VIEW



4 OFF M10x20 TAPPED HOLES
EQUI SP. ON 77.8 PCD
CAN BE MOUNTED TO 2-4" POLE
VIA 039A MOUNTING KIT
(NOT SUPPLIED)

GA: 1185



ELECTRICAL

Frequency	3.40 - 3.60 GHz
Gain	9 dBi Nom
Polarisation	Right Hand Circular
Beamwidth	360° (Az) x 12° (El) Approx
Axial Ratio	3 dB Typ
VSWR	1.5:1
Power Rating	10 W
Front to Back	N/A

MECHANICAL

Standard Finish	Gloss White
Mass	1.4 Kg (3.1 lbs)
Temperature	-30° to +50°C
Wind Loading	7.5 Kg (16.5 lbs) @ 100mph

MOUNTING OPTIONS

Kits Available	039A
See separate data sheets	

ADDITIONAL NOTES

Issued 041110

European Antennas Limited trading as Cobham Antenna Systems, Microwave Antennas

European Antennas Limited has a policy of continuous development and stress that the information provided is a guide only and does not constitute an offer or contract or part thereof. Whilst every effort is made to ensure the accuracy of the information contained in this brochure, no responsibility can be accepted for any errors or omissions.

The copyright of antenna designs and images is copyright protected and owned by European Antennas Limited.
©European Antennas Limited

For further information please contact:

Cobham Antenna Systems, Microwave Antennas
Lambda House, Cheveley,
Newmarket, Suffolk CB8 9RG, UK.
Tel +44 (0)1638 732 177
Fax +44 (0) 1638 731999
Email newmarket.sales@cobham.com