

# SECTOR ANTENNA SA12-180-21V/1061

CONFORMS TO ETSI EN302 326-3 CLASS SS



## ELECTRICAL

FREQUENCY:	2.0 - 2.3 GHz
GAIN:	11 dBi Nominal
POLARISATION:	Linear (Vertical)
BEAMWIDTH:	180° (Az) x 7° (El) Approx.
CROSS POLAR:	20 dB Minimum
VSWR:	1.5 :1
POWER RATING:	50 W
FRONT TO BACK:	23 dB Minimum

## MECHANICAL

STANDARD FINISH:	Gloss White All Over
MASS:	3.5 Kg / 7.7 lbs Excl. Mounting Kit
TEMPERATURE:	-20° to +50°C
WIND LOADING:	49 Kg / 108 lbs @ 100 mph

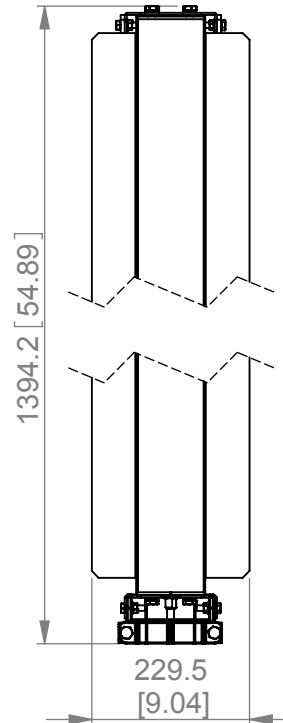
## MOUNTING OPTIONS

KITS AVAILABLE:	051A Included
See Separate Data Sheets	

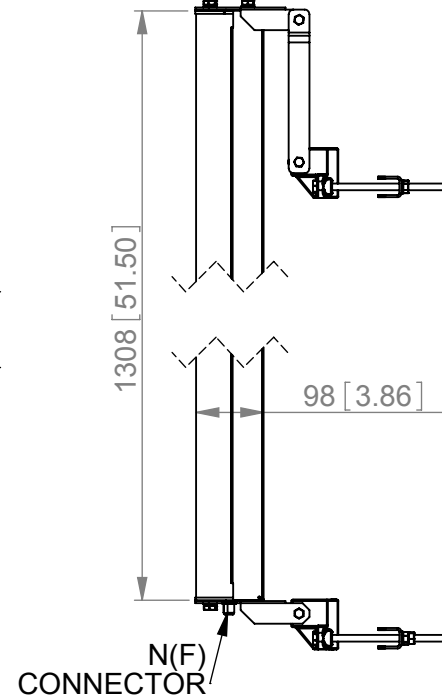
NOTE: PRODUCT DC GROUNDED

GA: 1061-3 Issued: 130308  
DIMENSIONS: mm [inches] M

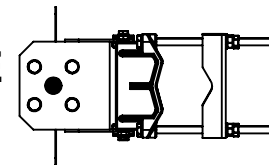
FRONT VIEW



SIDE VIEW



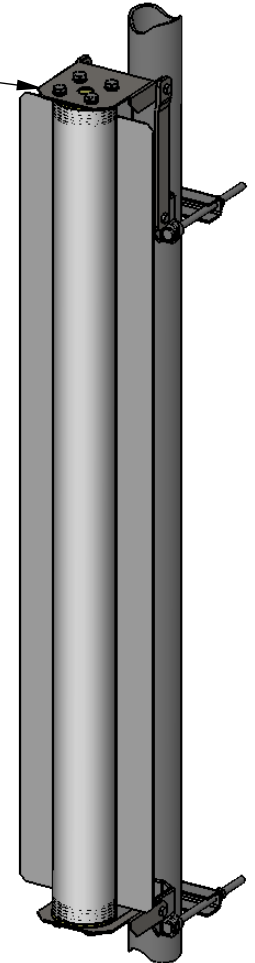
BASE VIEW



SUPPLIED WITH  
ADJUSTABLE  
MOUNTING KIT  
FOR ±9°  
IN ELEVATION

SUITS POLE SIZES  
40 [1.6] TO 120 [4.7]

ISOMETRIC VIEW



SA12-180-21V/1061

European Antennas Ltd. has a policy of continuous development and therefore stress that the data contained on this sheet should be used for guidance only.

European Antennas Ltd. is part of the Cobham Antennas Division



Certificate No 9268

European Antennas Ltd  
Lambda House, Cheveley  
Newmarket, Suffolk, CB8 9RG, UK  
Tel: +44 (0)1638 731888  
sales@european-antennas.co.uk  
[www.european-antennas.co.uk](http://www.european-antennas.co.uk)