

SECTOR ANTENNA SA12-180-24V/1046

CONFORMS TO ETSI EN302 326-3 CLASS SS



ELECTRICAL

FREQUENCY:	2.3 - 2.5 GHz
GAIN:	12 dBi Minimum
POLARISATION:	Linear (Vertical)
BEAMWIDTH:	180° (Az) x 7° (El) Approx.
CROSS POLAR:	20 dB Minimum
VSWR:	1.5 :1
POWER RATING:	50 W
FRONT TO BACK:	23 dB Minimum

MECHANICAL

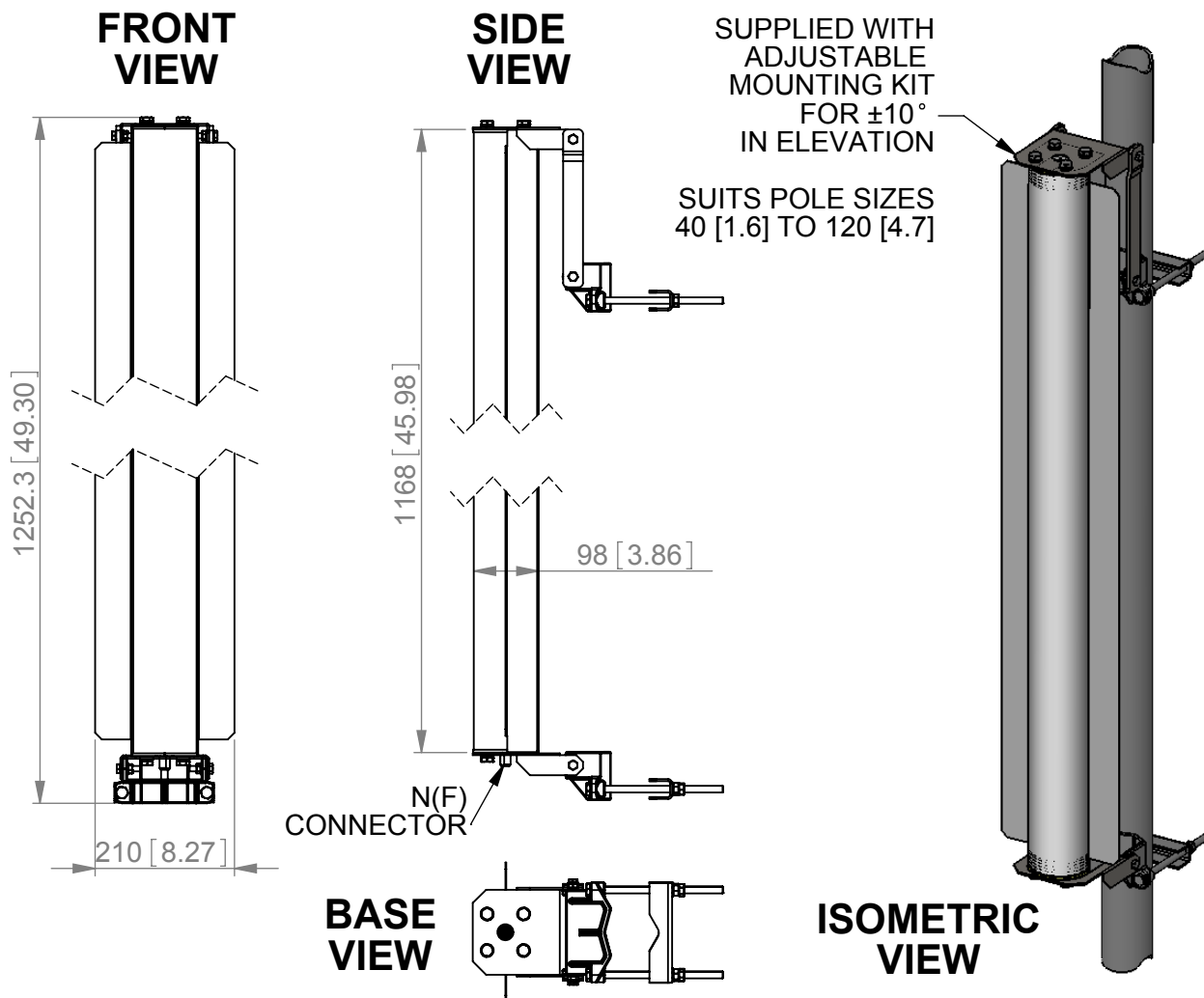
STANDARD FINISH:	Gloss White All Over
MASS:	3.2 Kg / 7.1 lbs Excl. Mounting Kit
TEMPERATURE:	-20° to +50°C
WIND LOADING:	39.8 Kg / 87.5 lbs @ 100 mph

MOUNTING OPTIONS

KITS AVAILABLE:	051A Included
See Separate Data Sheets	

NOTE: PRODUCT DC GROUNDED

GA: 1046-2 Issued: 130308
DIMENSIONS: mm [inches] M



SA12-180-24V/1046

European Antennas Ltd. has a policy of continuous development and therefore stress that the data contained on this sheet should be used for guidance only.

European Antennas Ltd. is part of the Cobham Antennas Division



Certificate No 9268

European Antennas Ltd
Lambda House, Cheveley
Newmarket, Suffolk, CB8 9RG, UK
Tel: +44 (0)1638 731888
sales@european-antennas.co.uk
www.european-antennas.co.uk