



# EUROPEAN ANTENNAS

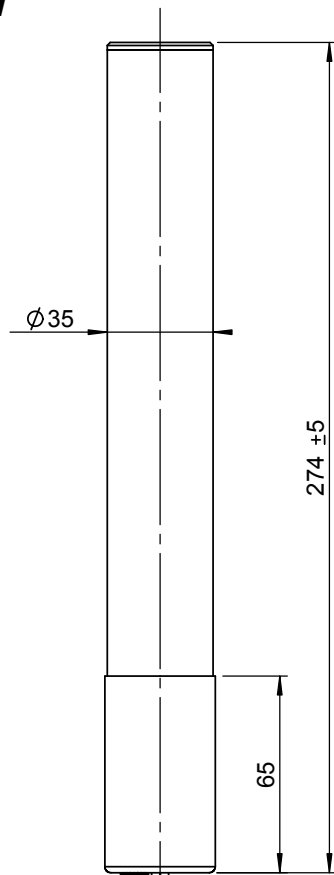
Excellence through design  
Creative in concept

## HORIZONTALLY POLARISED OMNI ANTENNA

### MODEL: XHO10-145/1190

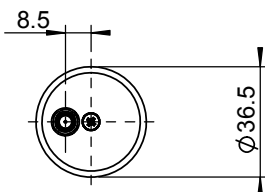
<b>FREQUENCY:</b>	14.42 - 14.52 GHz	<b>GAIN:</b>	10 dBi Typ. On mean of ripple
<b>POLARISATION:</b>	Linear (Horizontal)	<b>BEAMWIDTH:</b>	360° (Az.) x c7° (El.) Approx
<b>CROSS POLAR:</b>	20 dB Minimum	<b>VSWR:</b>	2.5:1
<b>POWER RATING:</b>	50 W	<b>FRONT TO BACK:</b>	N/A
<b>TEMPERATURE:</b>	-20° to +50°C	<b>MASS:</b>	215 g / 0.47 lbs .
<b>FINISH:</b>	Grey Radome, Alocrom 1200 Spigot	<b>WIND LOADING:</b>	1.57 Kg / 3.46 lbs @ 100 mph

### SIDE VIEW

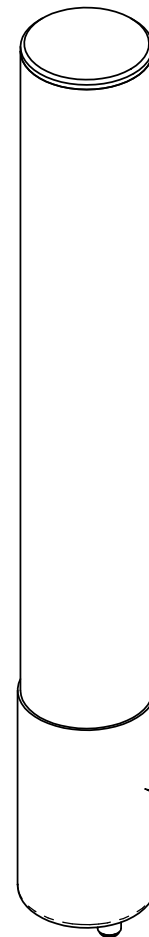


SMA(F)  
CONNECTOR

### BOTTOM VIEW



### ISOMETRIC VIEW



MOUNTED VIA  
Ø36.5 SPIGOT

<b>DIMENSIONS:</b> mm (inches)	M
GA: 1190 - 2	Issued: 100105

EUROPEAN ANTENNAS LTD.

Tel: +44 (0)1638 731888  
Fax: +44 (0)1638 731999

LAMBDA HOUSE, CHEVELEY  
NEWMARKET, SUFFOLK, CB8 9RG,  
UNITED KINGDOM

E-Mail: [sales@european-antennas.co.uk](mailto:sales@european-antennas.co.uk)  
Website: [www.european-antennas.co.uk](http://www.european-antennas.co.uk)