



EUROPEAN ANTENNAS

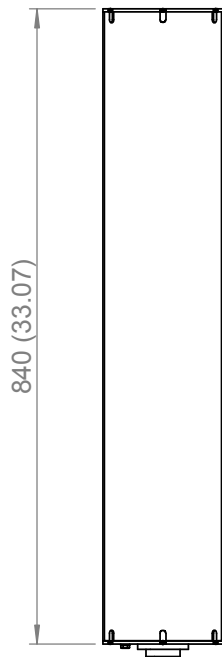
Excellence through design
Creative in concept

BASE STATION SECTOR ANTENNA

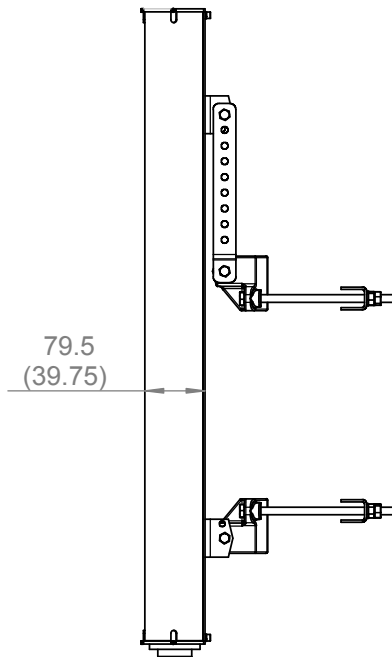
MODEL: SA13-120-2450R/1031

FREQUENCY:	2.40 - 2.50 GHz	GAIN:	12 dBi Nominal
POLARISATION:	R.H. Circular	BEAMWIDTH:	150° (Az.) x 10° (El.)
AXIAL RATIO:	3 dB Typical	VSWR:	1.5 : 1
POWER RATING:	50 W	FRONT TO BACK:	> 10 dB Across 120° Sector
TEMPERATURE:	-40° to +60°C	MASS:	7 Kg / 15.4 lbs (Inc. Mtg. Kit)
RADOME:	Gloss Grey - Glass Fibre	WIND LOADING:	21.7 Kg/47.7 lbs @ 100 mph

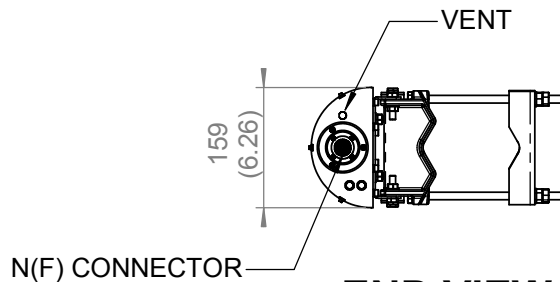
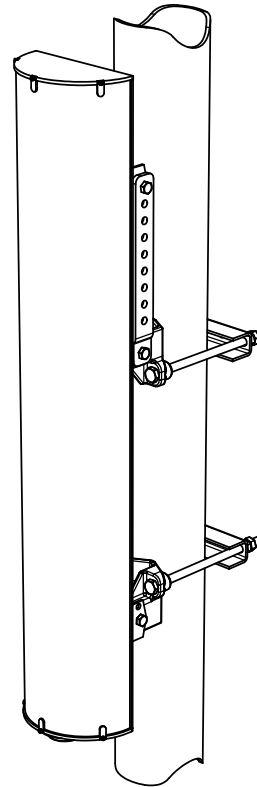
FRONT VIEW



SIDE VIEW



PICTORIAL VIEW



END VIEW

MOUNTING KIT (INCLUDED)
ADJUSTABLE TO
±21° IN ELEVATION
& SUITS POLE SIZES
40mm (1.6") TO 120mm (4.7")

DIMENSIONS: mm (inches) H

GA: 1031-2 Issued: 070904

EUROPEAN ANTENNAS LTD.

Tel: +44 (0)1638 731888
Fax: +44 (0)1638 731999

LAMBDA HOUSE, CHEVELEY
NEWMARKET, SUFFOLK, CB8 9RG,
UNITED KINGDOM

E-Mail: sales@european-antennas.co.uk
Website: www.european-antennas.co.uk