



EUROPEAN ANTENNAS

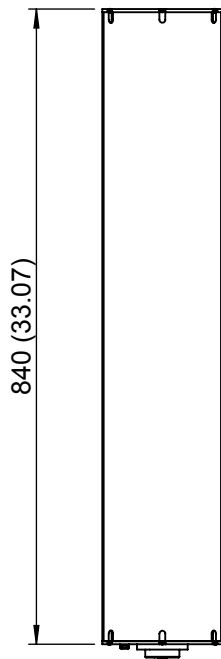
Excellence through design
Creative in concept

BASE STATION SECTOR ANTENNA

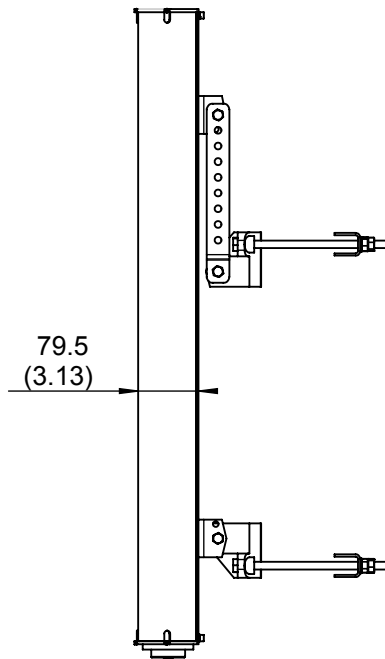
MODEL: SA13-180-35H-D1/838

FREQUENCY:	3.42 - 3.50 GHz	GAIN:	10 dBi Typical over 180°
POLARISATION:	Linear (Horizontal)	BEAMWIDTH:	180° (Az.) x 7° (El.) Approx.
CROSS POLAR:	25 dB Minimum	VSWR:	1.5 : 1 Maximum
POWER RATING:	25 W	FRONT TO BACK:	15 dB Typical
TEMPERATURE:	-40° to +60°C	MASS:	7 Kg / 15.4 lbs (Inc. Mtg. Kit)
RADOME:	Gloss Grey - Glass Fibre	WIND LOADING:	21.7 Kg/47.7 lbs @ 100 mph
ELECTRICAL DOWN TILT:	2°		

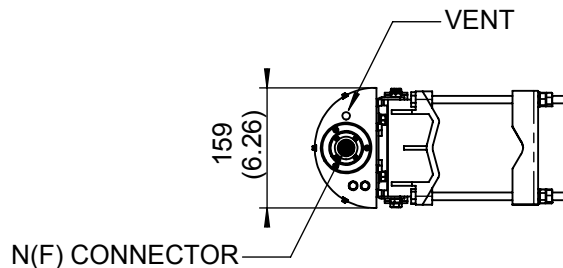
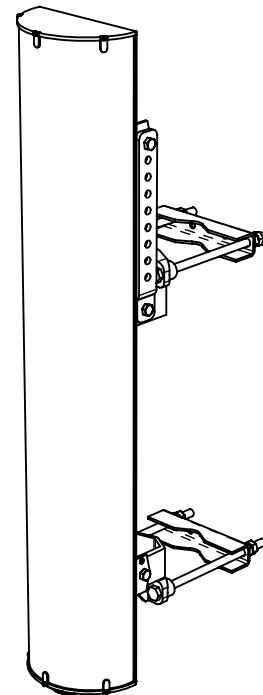
FRONT VIEW



SIDE VIEW



PICTORIAL VIEW



END VIEW

MOUNTING KIT (INCLUDED)
ADJUSTABLE TO
+21° IN ELEVATION
& SUITS POLE SIZES
40mm (1.6") TO 120mm (4.7")

DIMENSIONS: mm (inches)	H
GA: 0838-3	Issued: 070904

EUROPEAN ANTENNAS LTD.

Tel: +44 (0)1638 731888
Fax: +44 (0)1638 731999

LAMBDA HOUSE, CHEVELEY
NEWMARKET, SUFFOLK, CB8 9RG,
UNITED KINGDOM

E-Mail: sales@european-antennas.co.uk
Website: www.european-antennas.co.uk