



# EUROPEAN ANTENNAS

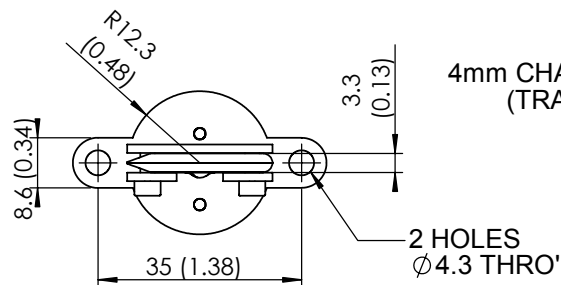
Excellence through design  
Creative in concept

## BLADE ANTENNA

### MODEL: SBA-38/919

<b>FREQUENCY:</b>	3.8-4.0 GHz (3.6-3.8 Reduced performance)	<b>GAIN:</b>	4 dBi Nom.
<b>POLARISATION:</b>	Linear (Vertical)	<b>BEAMWIDTH:</b>	360° (Az) x 60° (El)
<b>CROSS POLAR:</b>	-15 dB Typ.	<b>VSWR:</b>	2:1 Worst Case
<b>POWER RATING:</b>	10 W	<b>FRONT TO BACK:</b>	N/A
<b>TEMPERATURE:</b>	-20°C to +50°C	<b>MASS:</b>	23g
<b>FINISH:</b>	Matt Black	<b>WIND LOADING:</b>	0.44 Kg / 0.98 lbs

### TOP VIEW



4mm CHAMFER @ 20°  
(TRAILING EDGE)

R1.6 FILLET  
(LEADING EDGE)

2 HOLES  
Ø4.3 THRO'

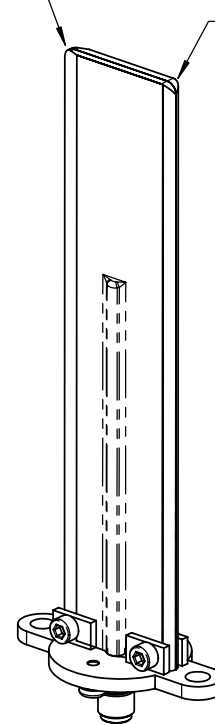
25 (0.98)

112.4 (4.43)

2.5 (0.10)

43.6 (1.72)

SMA(F)  
CONNECTOR



### PICTORIAL VIEW

### SIDE VIEW

DIMENSIONS: mm (inches)

GA: 0919-3 Issued:070502

EUROPEAN ANTENNAS LTD.

Tel: +44 (0)1638 731888  
Fax: +44 (0)1638 731999

LAMBDA HOUSE, CHEVELEY  
NEWMARKET, SUFFOLK, CB8 9RG,  
UNITED KINGDOM

E-Mail: sales@european-antennas.co.uk  
Website: www.european-antennas.co.uk