



EUROPEAN ANTENNAS

Excellence through design
Creative in concept

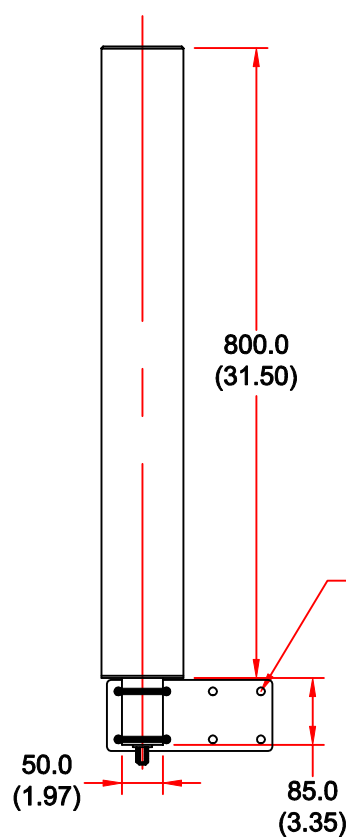


HIGH GAIN OMNI ANTENNA

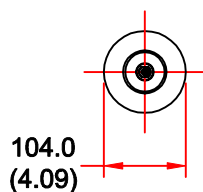
MODEL: RC010-2350R-D1/814

FREQUENCY:	2.3 - 2.4 GHz	GAIN:	8 dBiC
POLARISATION:	Circular (R.H.C)	BEAMWIDTH:	360° x 12°
AXIAL RATIO:	3 dB	VSWR:	1.5:1
POWER RATING:	50 W	FRONT TO BACK:	N/A
TEMPERATURE:	-20°C to +50°C	MASS:	1.7 Kg / 0.78 lbs
FINISH:	Gloss White	WIND LOADING:	14.2 Kg / 31.2 lbs @ 100 mph

SIDE VIEW

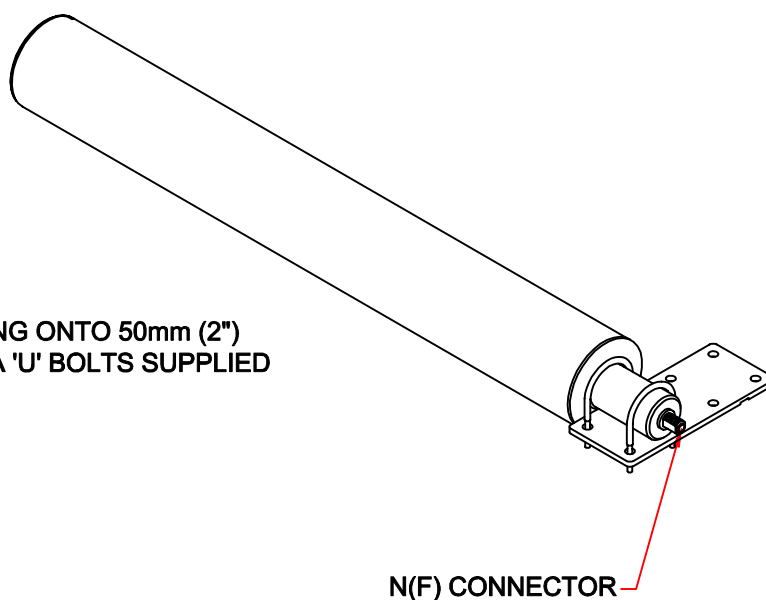


MOUNTING ONTO 50mm (2")
POLE VIA 'U' BOLTS SUPPLIED



REAR VIEW

ISOMETRIC VIEW



N(F) CONNECTOR

DIMENSIONS: mm (inches)

GA 814-1 Issued 130201

EUROPEAN ANTENNAS LTD.

TEL: +44 (0)1638 731888
FAX: +44 (0)1638 731999

LAMBDA HOUSE, CHEVELEY,
NEWMARKET, SUFFOLK, CB8 9RG,
UNITED KINGDOM.

E-Mail: sales@european-antennas.co.uk
Website: www.european-antennas.co.uk

European Antennas Ltd. has a policy of continuous development and therefore stress that the data contained on this sheet should be used for guidance only.