

# EVD2-2050/712

**COBHAM**

Omni Antenna

The most important thing we build is trust

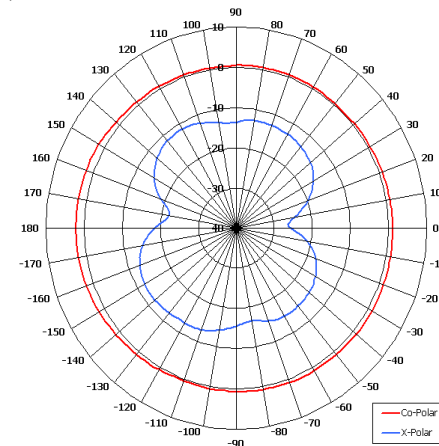
Designed for Cellular DAS Applications

Suitable for Indoor Applications

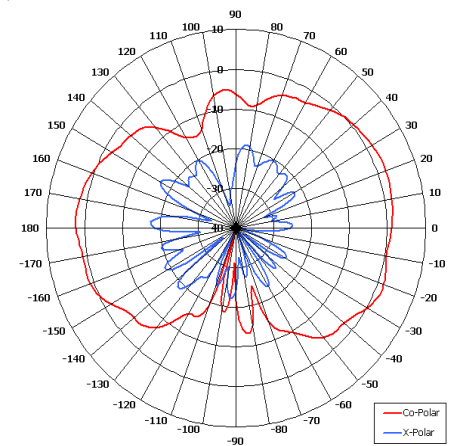
Lightweight

Simple Installation

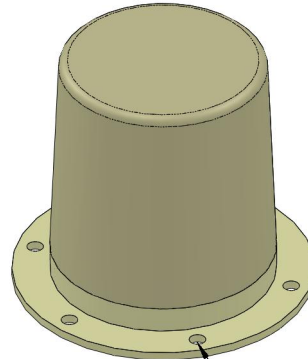
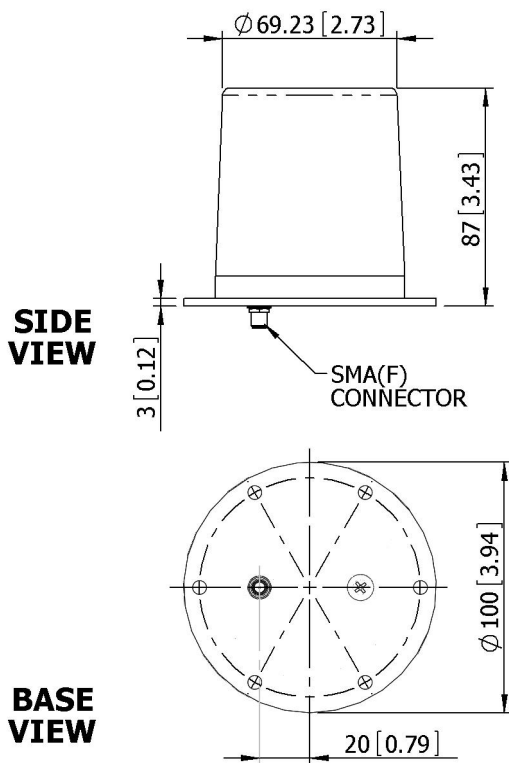
Colour Options



Azimuth Pattern



Elevation Pattern



MOUNTED VIA  
6 OFF  $\varnothing$  5.5 HOLES  
EQUI-SPACED  
ON 87.5 [3.44] PCD

**SIDE VIEW**

**BASE VIEW**

**GA: 0712**

**ELECTRICAL**

Frequency	1920 - 2170 MHz
Gain	2 dBi Nom
Polarisation	Linear (Vertical)
Beamwidth	360° (Az) x 75° (El) Approx
Cross Polar	12 dB Typ
VSWR	2.5:1 (Band Edges), 2.0:1 (Band Centre)
Power Rating	10 W
Front to Back	N/A

**MECHANICAL**

Standard Finish	Beige Polypropylene
Mass	150 g (4.3 oz)
Temperature	-20° to +50° C
Wind Loading	1.07 Kg (2.36 lbs) @ 100mph

**MOUNTING OPTIONS**

Kits Available	N/A
----------------	-----

See separate data sheets

**ADDITIONAL NOTES**

Issued 210510

European Antennas Limited trading as Cobham Antenna Systems, Microwave Antennas

European Antennas Limited has a policy of continuous development and stress that the information provided is a guide only and does not constitute an offer or contract or part thereof. Whilst every effort is made to ensure the accuracy of the information contained in this brochure, no responsibility can be accepted for any errors or omissions.

The copyright of antenna designs and images is copyright protected and owned by European Antennas Limited.  
©European Antennas Limited

For further information please contact:

Cobham Antenna Systems, Microwave Antennas  
Lambda House, Cheveley,  
Newmarket, Suffolk CB8 9RG, UK.  
Tel +44 (0)1638 732 177  
Fax +44 (0) 1638 731999  
Email newmarket.sales@cobham.com