

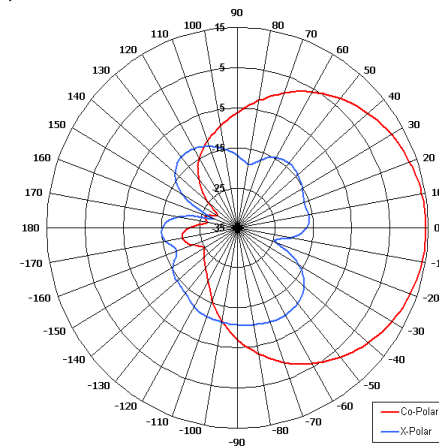
MSA5-24L-ECS/763

COBHAM

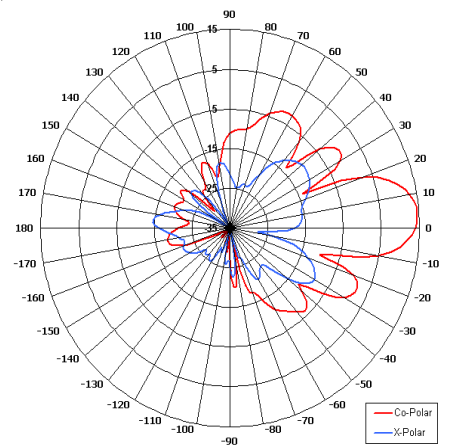
Multi-Sector Antenna

The most important thing we build is trust

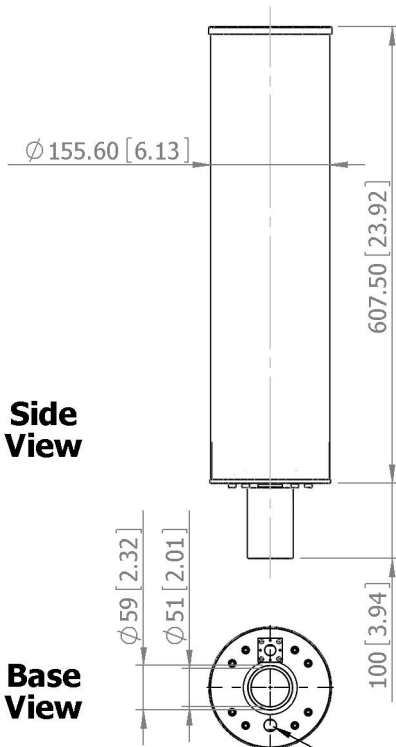
- Designed for Air to Ground Telemetry Link
- Designed for Security Applications
- Azimuth Coverage 4 Sectors
- Overhead Coverage - LHC Element
- Provides Internal Mounting for Electronics



Azimuth Pattern

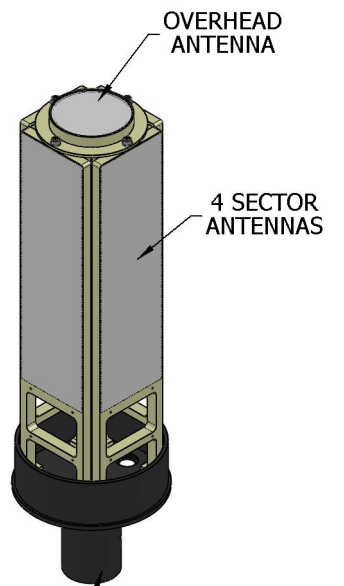


Elevation Pattern



Side View

Base View



OVERHEAD ANTENNA

4 SECTOR ANTENNAS

MOUNTED VIA SPIGOT 59 OD x 51 ID

VIEW SHOWING RADOME REMOVED

GA: 0763

HOLE FOR CABLE EXIT

ELECTRICAL

Frequency	2.30 - 2.50 GHz
Gain	13 dBiC (Sectors), 7 dBiC (Overhead) Nom
Polarisation	Left Hand Circular
Beamwidth	90° x 20° (Sectors) 80° x 80° (Overhead) Typ
Axial Ratio	3 dB Typ
VSWR	1.5:1
Power Rating	10 W Per Antenna
Front to Back	20 dB (on Sectors)

MECHANICAL

Standard Finish	Gloss White
Mass	4 Kg (8.8 lbs)
Temperature	-20° to +50°C
Wind Loading	16.3 Kg (35.8 lbs) @ 100mph

MOUNTING OPTIONS

Kits Available	N/A
See separate data sheets	

ADDITIONAL NOTES

Issued 040310

European Antennas Limited trading as Cobham Antenna Systems, Microwave Antennas

European Antennas Limited has a policy of continuous development and stress that the information provided is a guide only and does not constitute an offer or contract or part thereof. Whilst every effort is made to ensure the accuracy of the information contained in this brochure, no responsibility can be accepted for any errors or omissions.

The copyright of antenna designs and images is copyright protected and owned by European Antennas Limited.
©European Antennas Limited

For further information please contact:

Cobham Antenna Systems, Microwave Antennas
Lambda House, Cheveley,
Newmarket, Suffolk CB8 9RG, UK.
Tel +44 (0)1638 732 177
Fax +44 (0) 1638 731999
Email newmarket.sales@cobham.com