



# EUROPEAN ANTENNAS

Excellence through design  
Creative in concept

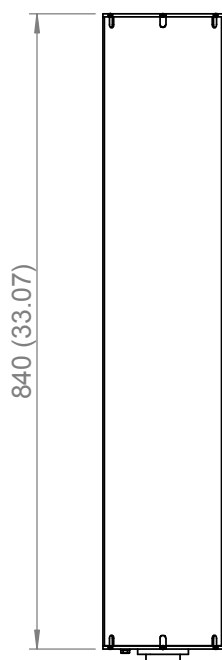
## BASE STATION SECTOR ANTENNA

### MODEL: SA13-180V-35B-D3/800

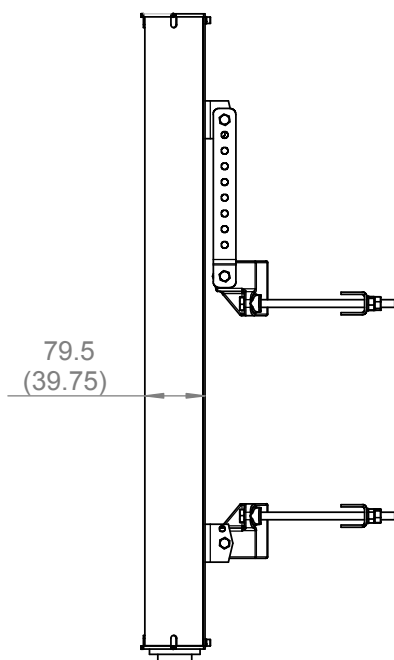
CONFORMS TO ETSI EN 302 085 V1.1.1 CLASS CS 1, SYMMETRIC ELEVATION

<b>FREQUENCY:</b>	3.40 - 3.72 GHz	<b>GAIN:</b>	14.0 dBi Peak & >11.0 dBi over 180°
<b>POLARISATION:</b>	Linear (Vertical)	<b>BEAMWIDTH:</b>	180° (Azimuth) x 10° (Elevation)
<b>CROSS POLAR:</b>	-25 dB Typical	<b>VSWR:</b>	2.0 : 1 Maximum
<b>POWER RATING:</b>	20 W	<b>FRONT TO BACK:</b>	20 dB
<b>TEMPERATURE:</b>	-40° to +60°C	<b>MASS:</b>	7.0 Kg/15.4 lbs (Including Mtg. Kit)
<b>RADOME:</b>	Gloss Grey/Glass Fibre	<b>WIND LOADING:</b>	21.7 Kg/47.7 lbs @ 100 mph
<b>VRP:</b>	1st Null Fill & Sidelobe Suppression	<b>ELECTRICAL DOWNTILT:</b>	2°

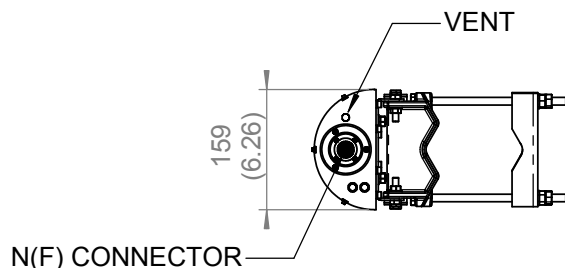
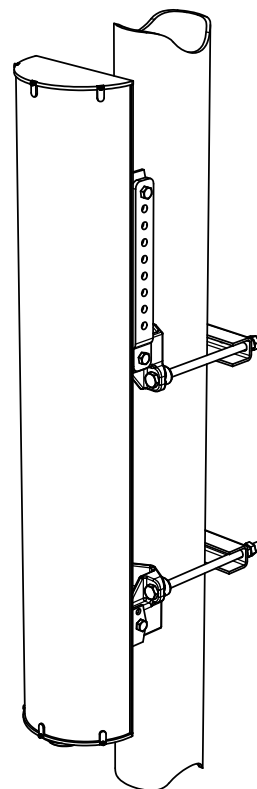
**FRONT VIEW**



**SIDE VIEW**



**PICTORIAL VIEW**



**END VIEW**

MOUNTING KIT (INCLUDED)  
ADJUSTABLE TO  
±21° IN ELEVATION  
& SUITS POLE SIZES  
40mm (1.6") TO 120mm (4.7")

NOTE: PRODUCT D.C. GROUNDED

**DIMENSIONS:** mm (inches) H

**GA: 0800-5 Issued: 070904**

EUROPEAN ANTENNAS LTD.

Tel: +44 (0)1638 731888  
Fax: +44 (0)1638 731999

LAMBDA HOUSE, CHEVELEY  
NEWMARKET, SUFFOLK, CB8 9RG,  
UNITED KINGDOM

E-Mail: [sales@european-antennas.co.uk](mailto:sales@european-antennas.co.uk)  
Website: [www.european-antennas.co.uk](http://www.european-antennas.co.uk)

European Antennas Ltd. has a policy of continuous development and therefore stress that the data contained on this sheet should be used for guidance only.