

# SA16-60-35V/579

# COBHAM

## Sector Antenna

The most important thing we build is trust

Designed for WiMAX/LTE Applications

High Gain

Elevation Null Fill

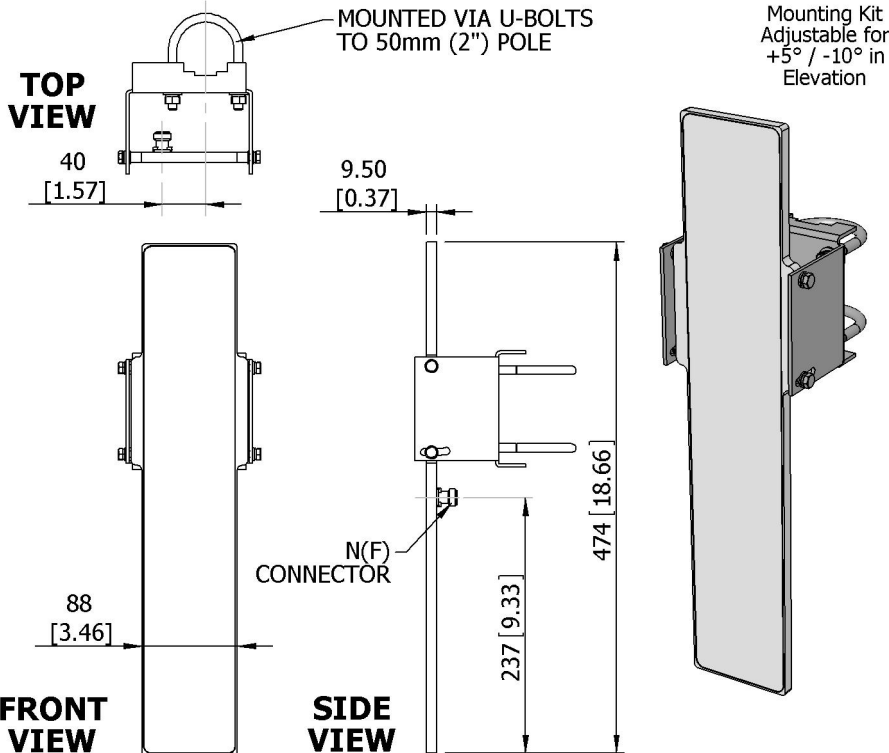
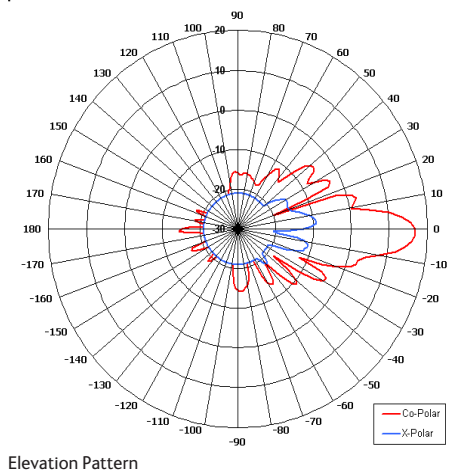
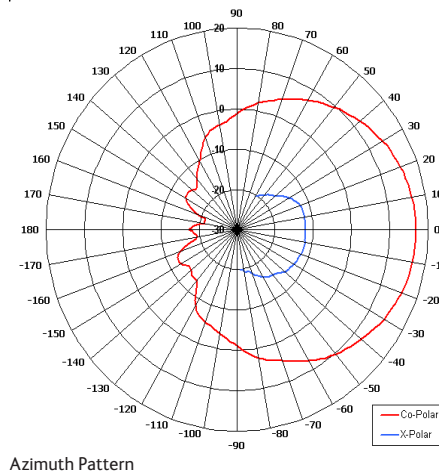
Low Side Lobe Performance

Low Profile

Rugged

Conforms to ETSI EN 302 085 V1.1.2

Class CS 2 Asymmetrical Elevation Pattern



**GA: 0579**

### ELECTRICAL

Frequency	3.40 - 3.72 GHz
Gain	16.5 dBi Nom
Polarisation	Linear (Vertical)
Beamwidth	60° (Az) x 10° (El) Approx
Cross Polar	25 dB Typ
Null Fill	1st Below Horizon -20dB
VSWR	2:1 Max, 1.5:1 Typ
Power Rating	20 W
Front to Back	30 dB Min
Electrical Tilt	2° Down

### MECHANICAL

Standard Finish	Gloss White
Mass	1.15 Kg (2.53 lbs) (incl Brackets)
Temperature	-45° to +65°C
Wind Loading	7,0 Kg (15.6 lbs) @ 100mph
Index of Environmental Protection	IP 67

### MOUNTING OPTIONS

Kits Available Included

See separate data sheets

### ADDITIONAL NOTES

Issued 060111

European Antennas Limited trading as Cobham Antenna Systems, Microwave Antennas

European Antennas Limited has a policy of continuous development and stress that the information provided is a guide only and does not constitute an offer or contract or part thereof. Whilst every effort is made to ensure the accuracy of the information contained in this brochure, no responsibility can be accepted for any errors or omissions.

The copyright of antenna designs and images is copyright protected and owned by European Antennas Limited.  
©European Antennas Limited

For further information please contact:

Cobham Antenna Systems, Microwave Antennas

Lambda House, Cheveley,

Newmarket, Suffolk CB8 9RG, UK.

Tel +44 (0)1638 732 177

Fax +44 (0) 1638 731999

Email [antennasystems.ma@cobham.com](mailto:antennasystems.ma@cobham.com)