

OMNI ANTENNA RCO5-3450-M01/518



ELECTRICAL

FREQUENCY:	3.35 - 3.55 GHz
GAIN:	4 dBiC Nominal
POLARISATION:	Right Hand Circular
BEAMWIDTH:	360° (Az) x 40° (El) Approx.
AXIAL RATIO:	3 dB Typical
VSWR:	1.5:1, 2:1 Maximum
POWER RATING:	10 W
FRONT TO BACK:	N/A
STANDARD FINISH:	Gloss White

MECHANICAL

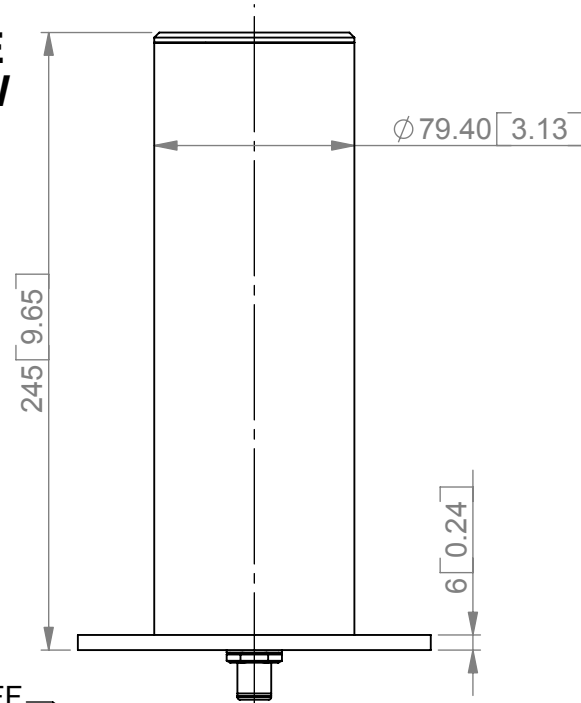
MASS:	600 g / 1.32 lbs
TEMPERATURE:	-20° to +50°C
WIND LOADING:	3.15 kg / 6.94 lbs @ 100 mph

MOUNTING OPTIONS

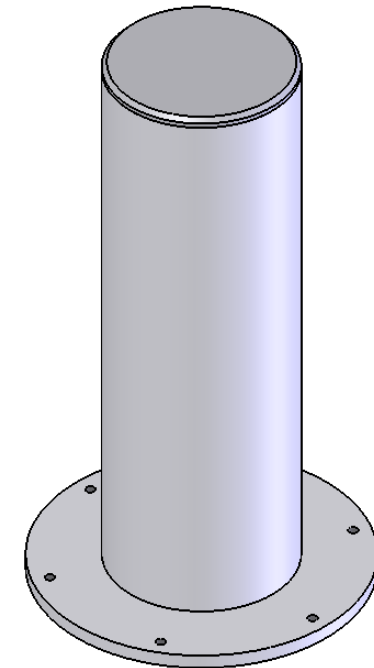
KITS AVAILABLE: N/A
See Separate Data Sheets

GA: 518-4 Issued: 300407
DIMENSIONS: mm [inches]

SIDE VIEW



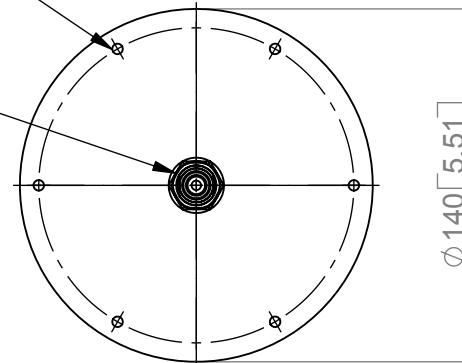
ISOMETRIC VIEW



MOUNT VIA 6 OFF
Ø4.2 HOLES
EQUI-SPACED
ON A 125 PCD.

N(F) CONNECTOR

BASE VIEW



RCO5-3450-M01/518

European Antennas Ltd. has a policy of continuous development and therefore stress that the data contained on this sheet should be used for guidance only.

European Antennas Ltd. is part of the Cobham Antennas Division



Certificate No 9268

European Antennas Ltd
Lambda House, Cheveley
Newmarket, Suffolk, CB8 9RG, UK
Tel: +44 (0)1638 731888
sales@european-antennas.co.uk
www.european-antennas.co.uk